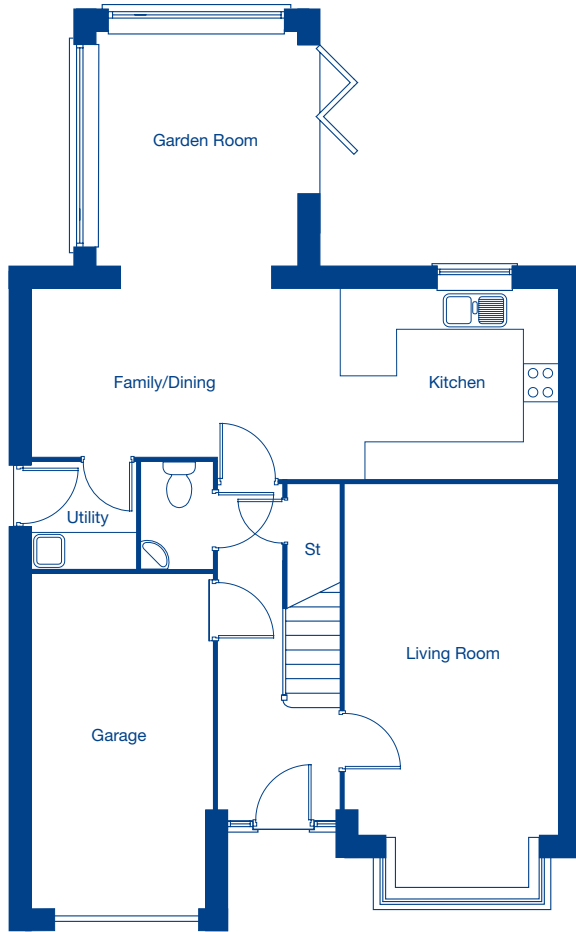


Westlow Heath

The Banbury – 4 bedroom detached home

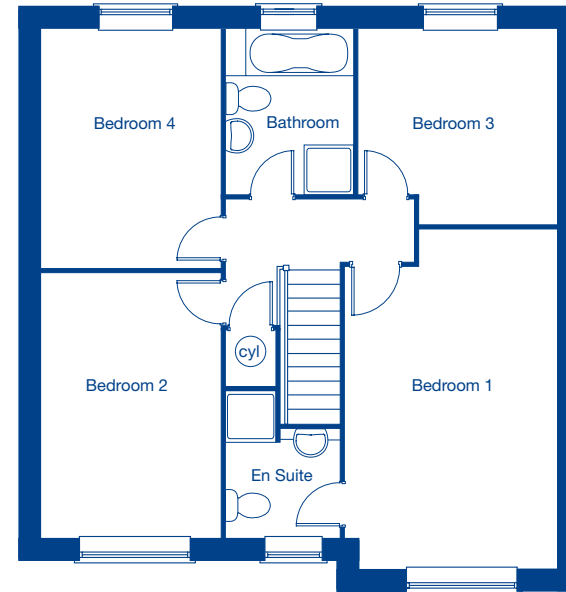


JONES
HOMES



Ground Floor

Living Room	6.15m x 3.34m	20'2" x 10'11"
Kitchen/Family/Dining	8.20m x 2.94m	26'11" x 9'8"
Garden Room	3.69m x 3.14m	12'1" x 10'4"
Garage	5.37m x 2.67m	17'7" x 8'9"



First Floor

Bedroom 1	5.21m x 3.41m	17'1" x 11'2"
Bedroom 2	4.16m x 2.79m	13'8" x 9'2"
Bedroom 3	3.19m x 3.19m	10'6" x 10'6"
Bedroom 4	3.80m x 2.79m	12'6" x 9'2"