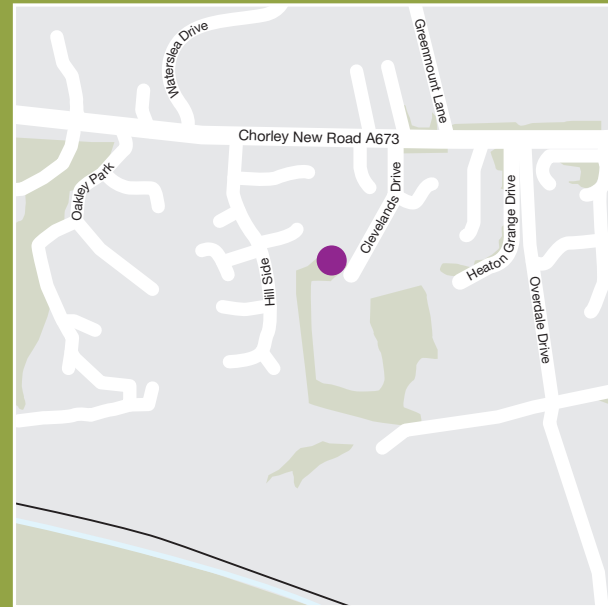


Cleavelands
 Cleavelands Drive, off Chorley New Road, Bolton BL1 5GJ



Head Office:
 Emerson House, Heyes Lane, Alderley Edge, Cheshire SK9 7LF
 Telephone: 0800 128812

jones-homes.co.uk

Details correct at time of going to print. Images representative only. Internal photography may show upgraded specification. Ask Sales Advisor for details. JHNW278 / September 2017.



Job No.	JHNW278	Date	29/09/17
Version	v3	Size @ 100%	297x210mm
Job	8pp Brochure	Designer	Guy Sanderson



Cleavelands

Kingsley House – 2 bedroom apartments



Job No.	JHNW278	Date	29/09/17
Version	v3	Size @ 100%	297x210mm
Job	8pp Brochure	Designer	Guy Sanderson



- The Chester
4 bedroom townhouse
- The Winchester
4 bedroom townhouse
- The School House
Apartments 38-43
- Wordsworth House
Apartments 44-53
- Kingsley House
Apartments 54-63
- Marlowe House
Apartments 64-75
- Keats House
Apartments 76-85



Kingsley House

Set within the tranquil landscaped grounds of Clevelands, Kingsley House offers a collection of ten apartments, all built to traditionally high standards, suiting everyone from first time buyers to downsizers.

Designed with modern living in mind, these stunning two bedroom two bathroom apartments, offer light and airy interiors with a superior specification throughout.

These details are prepared for the guidance of prospective purchasers and do not form part of any contract. Furthermore Jones Homes reserve the right to vary details from time to time as may be necessary.

Job No.	JHNW278	Date	29/09/17
Version	v3	Size @ 100%	297x210mm
Job	8pp Brochure	Designer	Guy Sanderson



Specification

Perfecting every last detail

Each and every Jones home is highly designed and specified throughout

General

- Oak veneer panel internal doors with polished chrome furniture
- Double glazed windows throughout
- Gas fired central heating with energy efficient boiler
- Floor coverings throughout
- Fitted wardrobes to bedroom 1
- TV and telephone points
- Video door entry system

Kitchen

- Contemporary Symphony kitchen with soft close buffers
- Granite worktops with matching upstands and splash back
- Built in stainless steel oven and microwave
- Stainless steel gas hob with chimney style extractor
- Integrated fridge, freezer, dishwasher and washer dryer
- Hansgrohe brassware
- LED ceiling downlights and worktop lighting

Bathroom/En Suite

- Villeroy & Boch sanitaryware with Hansgrohe brassware
- Aqualisa thermostatic shower to bathroom and en suite
- Fully tiled walls and floors from the Porcelanosa range
- Chrome ladder towel rails to bathrooms and en suites
- Illuminated bathroom cabinet with heated mirror
- LED downlights

External

- External maintenance of landscaped communal gardens
- Allocated parking
- NHBC Buildmark Cover



Job No.	JHNW278	Date	29/09/17
Version	v3	Size @ 100%	297x210mm
Job	8pp Brochure	Designer	Guy Sanderson



Ground Floor

Apartment 54

Living/Dining Room	5.32m x 4.82m	17'5" x 15'10"
Kitchen	3.59m x 2.80m	11'9" x 9'2"
Bedroom 1	4.02m x 3.61m	13'2" x 11'10"
En Suite	2.34m x 1.45m	7'8" x 4'9"
Bedroom 2	4.02m x 2.60m	13'2" x 8'6"
Bathroom	2.18m x 1.72m	7'2" x 5'8"

Apartment 55

Living/Dining Room	6.12m x 4.88m	20'1" x 16'0"
Kitchen	4.82m x 2.75m	15'10" x 9'0"
Bedroom 1	4.02m x 3.61m	13'2" x 11'10"
En Suite	2.80m x 1.57m	9'2" x 5'2"
Bedroom 2	4.02m x 2.60m	13'2" x 8'6"
Bathroom	2.18m x 1.72m	7'2" x 5'8"

Apartment 56

Living/Dining Room	5.32m x 4.82m	17'5" x 15'10"
Kitchen	3.54m x 2.80m	11'7" x 9'2"
Bedroom 1	4.02m x 3.61m	13'2" x 11'10"
En Suite	2.80m x 1.57m	9'2" x 5'2"
Bedroom 2	4.02m x 2.60m	13'2" x 8'6"
Bathroom	2.19m x 1.72m	7'2" x 5'8"



First Floor

Apartment 57

Living/Dining Room	5.32m x 4.82m	17'5" x 15'10"
Kitchen	3.59m x 2.80m	11'9" x 9'2"
Bedroom 1	4.02m x 3.61m	13'2" x 11'10"
En Suite	2.34m x 1.45m	7'8" x 4'9"
Bedroom 2	4.02m x 2.60m	13'2" x 8'6"
Bathroom	2.18m x 1.72m	7'2" x 5'8"

Apartment 58

Living/Dining Room	6.12m x 4.88m	20'1" x 16'0"
Kitchen	3.59m x 2.80m	11'9" x 9'2"
Bedroom 1	4.02m x 3.61m	13'2" x 11'10"
En Suite	2.80m x 1.57m	9'2" x 5'2"
Bedroom 2	4.02m x 2.60m	13'2" x 8'6"
Bathroom	2.18m x 1.72m	7'2" x 5'8"

Apartment 59

Living/Dining Room	5.32m x 4.82m	17'5" x 15'10"
Kitchen	3.54m x 2.80m	11'7" x 9'2"
Bedroom 1	4.02m x 3.61m	13'2" x 11'10"
En Suite	2.80m x 1.57m	9'2" x 5'2"
Bedroom 2	4.02m x 2.60m	13'2" x 8'6"
Bathroom	2.19m x 1.72m	7'2" x 5'8"



All floor plans within this booklet are provided for guidance and illustrative purposes only and do not form part of any contract. All room sizes are approximate to maximum dimensions.

Job No.	JHNW278	Date	29/09/17
Version	v3	Size @ 100%	297x210mm
Job	8pp Brochure	Designer	Guy Sanderson

Job No.	JHNW278	Date	29/09/17
Version	v3	Size @ 100%	297x210mm
Job	8pp Brochure	Designer	Guy Sanderson

Second Floor

Apartment 60

Living/Dining Room	4.82m x 4.02m	15'10" x 13'2"
Kitchen	3.59m x 2.80m	11'9" x 9'2"
Bedroom 1	4.02m x 3.61m	13'2" x 11'10"
En Suite	2.34m x 1.45m	7'8" x 4'9"
Bedroom 2	4.02m x 2.60m	13'2" x 8'6"
Bathroom	2.18m x 1.72m	7'2" x 5'8"

Apartment 61

Living/Dining Room	6.12m x 4.88m	20'1" x 16'0"
Kitchen	3.59m x 2.80m	11'9" x 9'2"
Bedroom 1	4.02m x 3.61m	13'2" x 11'10"
En Suite	2.80m x 1.57m	9'2" x 5'2"
Bedroom 2	4.02m x 2.60m	13'2" x 8'6"
Bathroom	2.18m x 1.72m	7'2" x 5'8"

Apartment 62

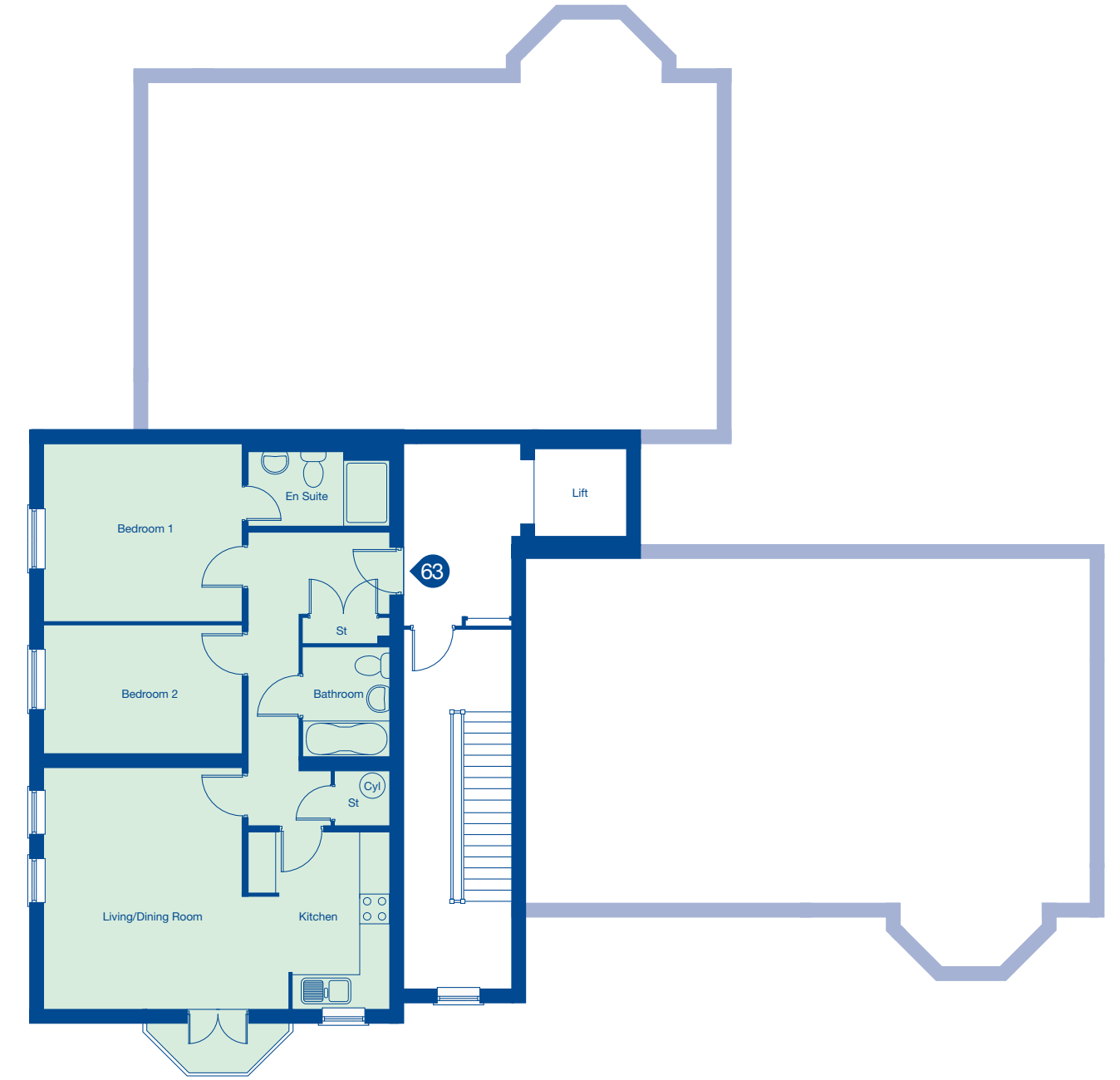
Living/Dining Room	4.82m x 4.02m	15'10" x 13'2"
Kitchen	3.59m x 2.80m	11'9" x 9'2"
Bedroom 1	4.02m x 3.61m	13'2" x 11'10"
En Suite	2.80m x 1.57m	9'2" x 5'2"
Bedroom 2	4.02m x 2.60m	13'2" x 8'6"
Bathroom	2.19m x 1.72m	7'2" x 5'8"



Third Floor

Apartment 63

Living/Dining Room	4.88m x 4.82m	16'0" x 15'10"
Kitchen	3.59m x 2.80m	11'9" x 9'2"
Bedroom 1	4.02m x 3.61m	13'2" x 11'10"
En Suite	2.80m x 1.57m	9'2" x 5'2"
Bedroom 2	4.02m x 2.72m	13'2" x 8'11"
Bathroom	2.19m x 1.72m	7'2" x 5'8"



Job No.	JHNW278	Date	29/09/17
Version	v3	Size @ 100%	297x210mm
Job	8pp Brochure	Designer	Guy Sanderson



Job No.	JHNW278	Date	29/09/17
Version	v3	Size @ 100%	297x210mm
Job	8pp Brochure	Designer	Guy Sanderson

