

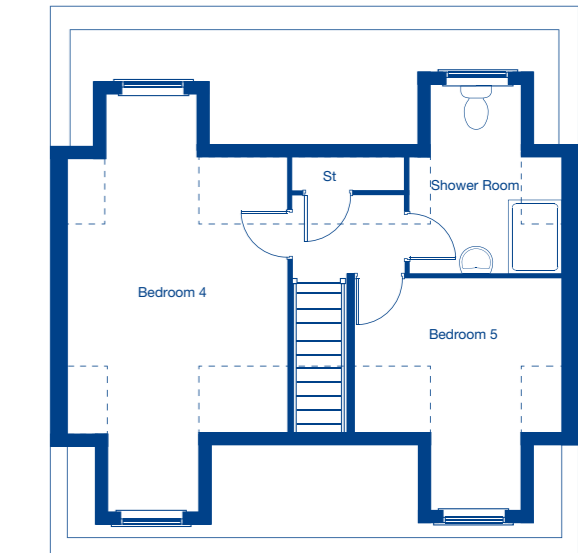
Ground Floor

Living Room	5.73m x 3.34m	18'10" x 10'11"
Kitchen/Family/Dining	8.20m x 2.94m	26'11" x 9'8"
Garage	5.26m x 2.69m	17'3" x 8'10"



First Floor

Bedroom 1	4.47m x 3.34m	14'8" x 10'11"
Dressing Area	2.56m x 1.78m	8'5" x 5'10"
Bedroom 2	3.97m x 2.79m	13'11" x 9'2"
Bedroom 3	3.97m x 2.79m	13'11" x 9'2"



Second Floor

Bedroom 4	6.90m x 3.74m	22'7" x 12'3"
Bedroom 5	3.67m x 3.34m	12'4" x 10'11"

--- Restricted ceiling height

These floor plans and images are for guidance and illustrative purposes only and do not form part of any contract. All room sizes are approximate to maximum dimensions and some plots may be subject to additional gable or bay windows. Please ask our Sales Advisor for details on specification and plot specific street scenes. Every effort has been taken to ensure these plans are as accurate as possible at time of printing. However, Jones Homes reserves the right to vary details as may be necessary and without notice. JHY3387/June 2019.