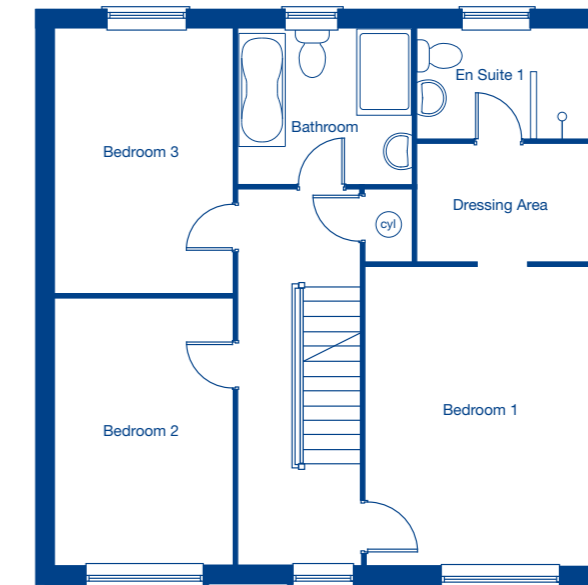


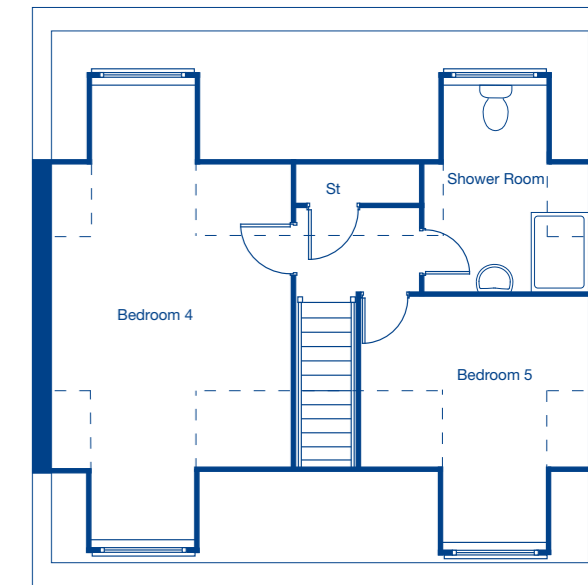
**Ground Floor**

Living Room	5.59m x 3.34m	18'4" x 10'11"
Kitchen/Family/Dining	8.05m x 2.95m	26'5" x 9'8"
Study	4.19m x 2.51m	13'9" x 8'3"
Detached Double Garage*	5.64m x 5.64m	18'6" x 18'6"



**First Floor**

Bedroom 1	4.47m x 3.34m	14'8" x 10'11"
Dressing Area	2.57m x 1.78m	8'5" x 5'10"
Bedroom 2	3.98m x 2.64m	13'1" x 8'8"
Bedroom 3	3.98m x 2.64m	13'1" x 8'8"



**Second Floor**

Bedroom 4	6.56m x 3.59m	21'6" x 11'9"
Bedroom 5	3.87m x 3.34m	12'8" x 10'11"

--- Restricted ceiling height

\*Integral Double Garage to plot 34, see working drawing.

These floor plans and images are for guidance and illustrative purposes only and do not form part of any contract. All room sizes are approximate to maximum dimensions and some plots may be subject to additional gable or bay windows. Please ask our Sales Advisor for details on specification and plot specific street scenes. Every effort has been taken to ensure these plans are as accurate as possible at time of printing. However, Jones Homes reserves the right to vary details as may be necessary and without notice. JHY3387/June 2019.