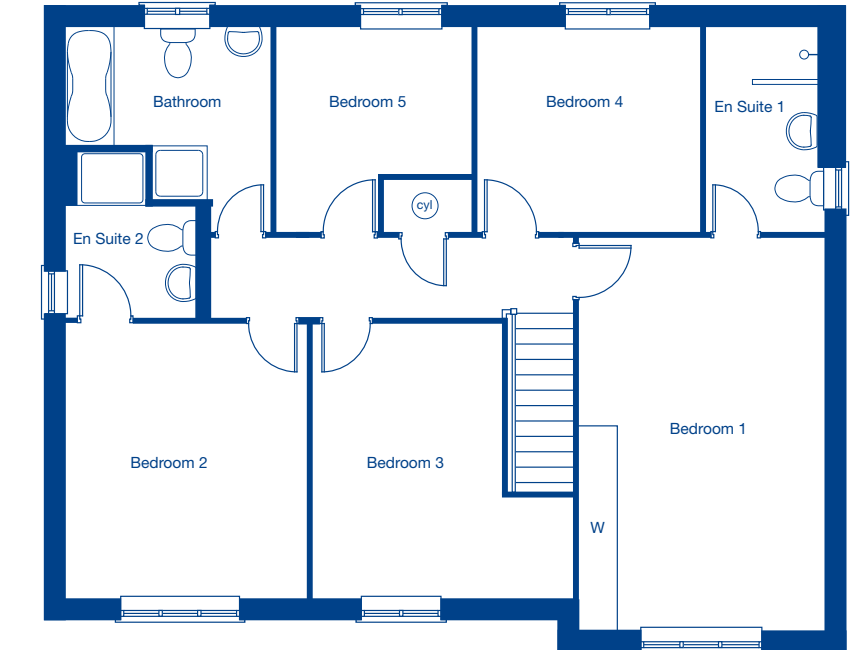


Ground Floor

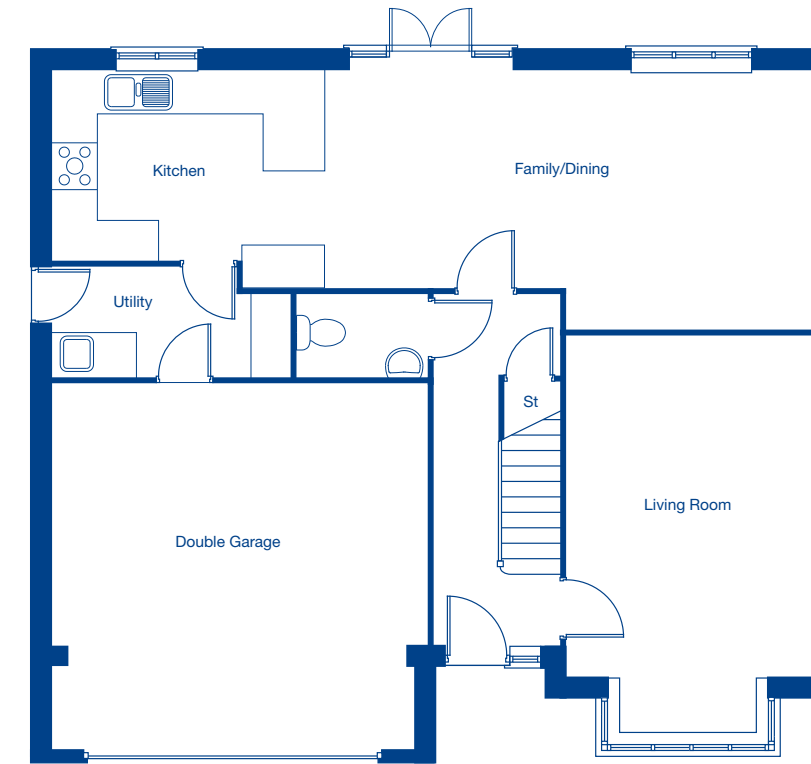
Living Room	5.68m x 3.54m	18'8" x 11'7"
Kitchen/Family/Dining	11.11m x 3.74m	36'6" x 12'3"
Garden Room	3.69m x 3.14m	12'1" x 10'4"
Double Garage	5.51m x 5.38m	18'1" x 17'8"



First Floor

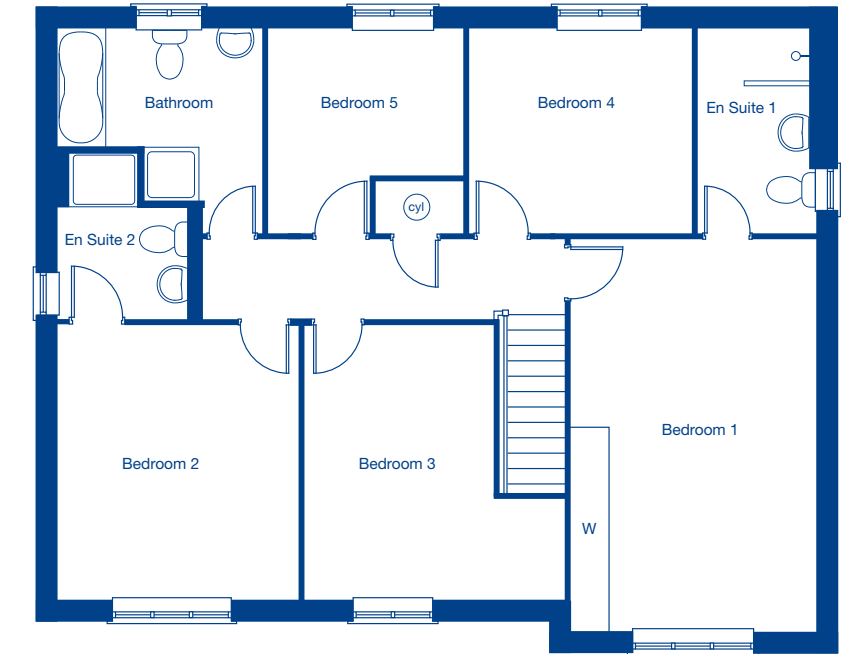
Bedroom 1	5.74m x 3.54m	18'10" x 11'7"
Bedroom 2	4.02m x 3.53m	13'2" x 11'7"
Bedroom 3	4.02m x 3.78m	13'2" x 12'5"
Bedroom 4	3.26m x 2.98m	10'8" x 9'10"
Bedroom 5	2.98m x 2.85m	9'10" x 9'5"

These floor plans and images are for guidance and illustrative purposes only and do not form part of any contract. All room sizes are approximate to maximum dimensions and some plots may be subject to additional gable or bay windows. Please ask our Sales Advisor for details on specification and plot specific street scenes. Every effort has been taken to ensure these plans are as accurate as possible at time of printing. However, Jones Homes reserves the right to vary details as may be necessary and without notice. JHY4434/December 2019.



Ground Floor

Living Room	5.68m x 3.54m	18'8" x 11'7"
Kitchen/Family/Dining	11.11m x 3.74m	36'6" x 12'3"
Double Garage	5.51m x 5.38m	18'1" x 17'8"



First Floor

Bedroom 1	5.74m x 3.54m	18'10" x 11'7"
Bedroom 2	4.02m x 3.53m	13'2" x 11'7"
Bedroom 3	4.02m x 3.78m	13'2" x 12'5"
Bedroom 4	3.26m x 2.98m	10'8" x 9'10"
Bedroom 5	2.98m x 2.85m	9'10" x 9'5"