



at Shurland Park

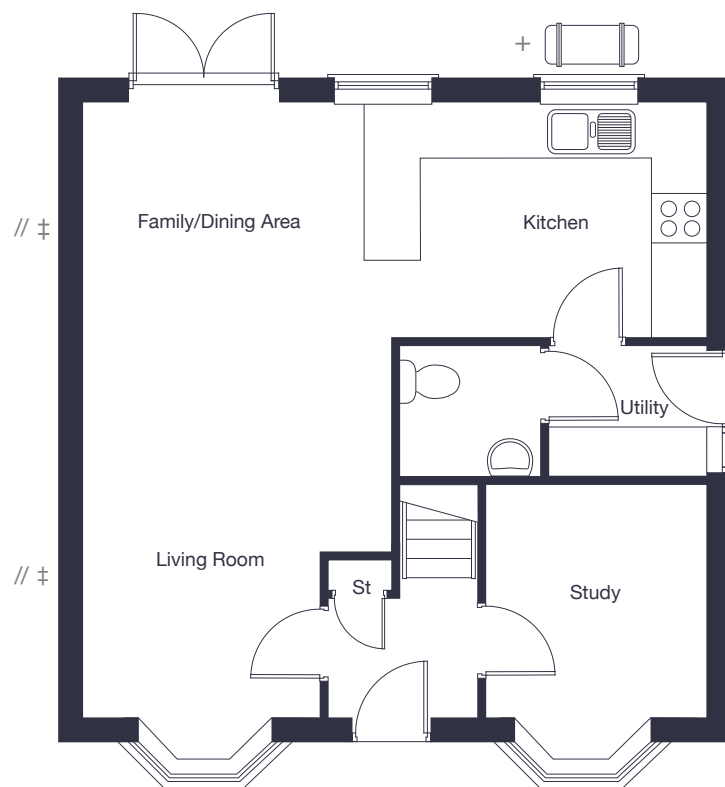
The Holford

4 bedroom
detached home

jones-homes.co.uk/shurland-park

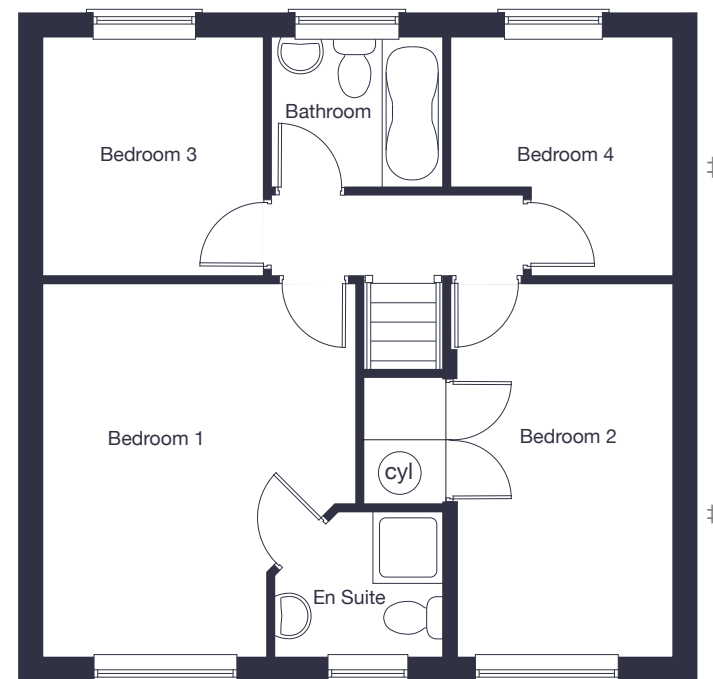
Built with you in mind





Ground Floor

Kitchen	4.07m x 2.70m	13'4" x 8'10"
Family/Dining Area	3.19m x 2.70m	10'6" x 8'10"
Living Room	4.46m* (plus bay) x 3.59m	14'8"* (plus bay) x 11'10"
Study	2.64m (plus bay) x 2.55m	8'8" (plus bay) x 8'5"



First Floor

Bedroom 1	4.32m* x 3.60m*	14'2"* x 11'10"*
Bedroom 2	4.30m x 2.47m	14'1" x 8'1"
Bedroom 3	2.52m x 2.74m	8'3" x 9'0"
Bedroom 4	2.74m* x 2.52m*	9'0"* x 8'3"*

* Denotes maximum dimension.

‡ Additional windows to plot 141.

// Additional windows to plot 6.

+ Indicative position of external Air Source Heat Pump. Please ask our Sales Advisor for plot specific position.

Floor plans, CGI and image are for guidance and illustrative purposes only and do not form part of any contract. All room sizes are approximate to maximum dimensions and some plots may be subject to additional gable or bay windows. Please ask our Sales Advisor for details on specification and plot specific street scenes. Every effort has been taken to ensure these plans are as accurate as possible at time of printing. However, Jones Homes reserves the right to vary details as may be necessary and without notice. JHS12912/March 2025.