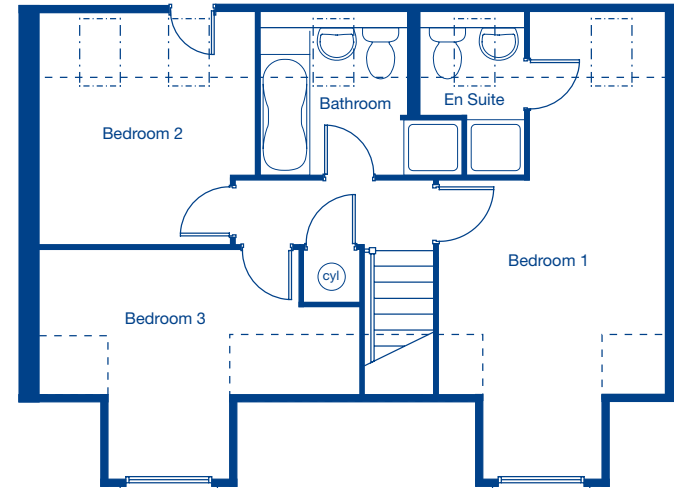


Ground Floor

Living Room	5.71m x 3.36m	18'9" x 11'0"
Kitchen/Family/Dining	8.74m x 3.74m	28'8" x 12'3"



First Floor

Bedroom 1	6.45m x 3.16m	21'2" x 10'4"
Bedroom 2	3.23m x 3.01m	10'7" x 9'10"
Bedroom 3	4.47m x 3.15m	14'8" x 10'4"

----- Skylight
 ----- Restricted head height

These floor plans and images are for guidance and illustrative purposes only and do not form part of any contract. All room sizes are approximate to maximum dimensions and some plots may be subject to additional gable or bay windows. Please ask our Sales Advisor for details on specification and plot specific streetscenes. Every effort has been taken to ensure these plans are as accurate as possible at time of printing. However, Jones Homes reserves the right to vary details as may be necessary and without notice.