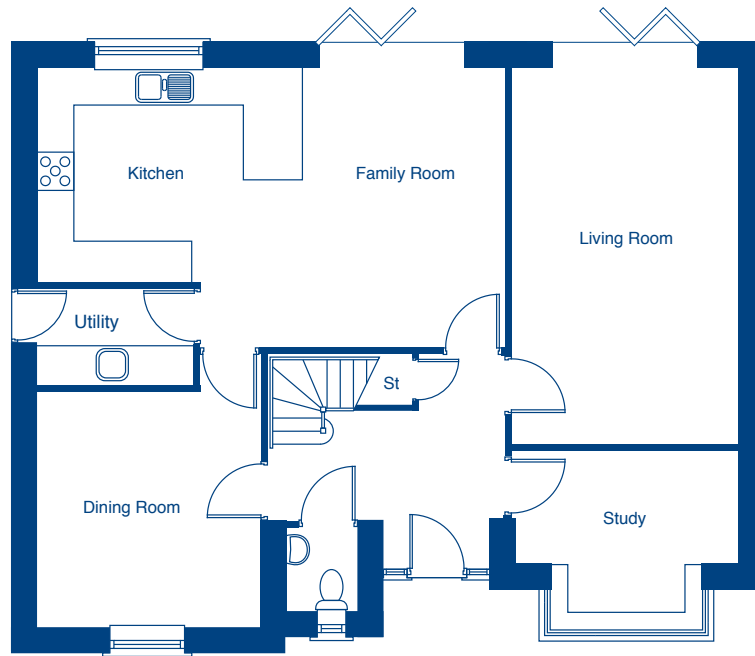


Stonecross Meadows

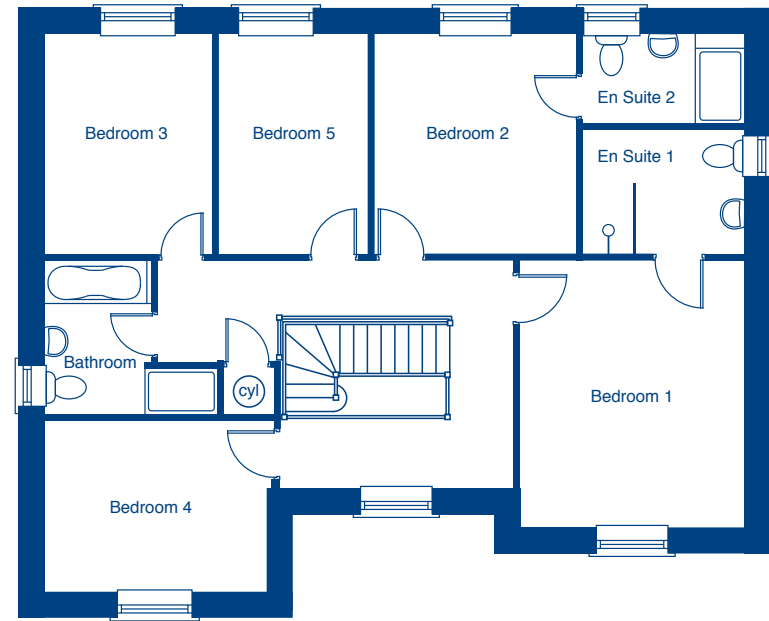
The Knightsbridge – 5 bedroom detached home





### Ground Floor

Living Room	6.10m x 3.66m	20'0" x 12'0"
Kitchen/Family	7.59m x 4.52m	24'11" x 14'10"
Dining Room	4.40m x 3.66m	14'5" x 12'0"
Study	3.66m x 2.59m	12'0" x 8'5"



### First Floor

Bedroom 1	4.37m x 3.66m	14'4" x 12'0"
Bedroom 2	3.62m x 3.28m	11'11" x 10'9"
Bedroom 3	3.62m x 2.71m	11'11" x 8'11"
Bedroom 4	3.75m x 2.78m	12'3" x 9'2"
Bedroom 5	3.62m x 2.44m	11'11" x 8'0"