

St Peter's Park

The Hollin B – 4 bedroom detached home

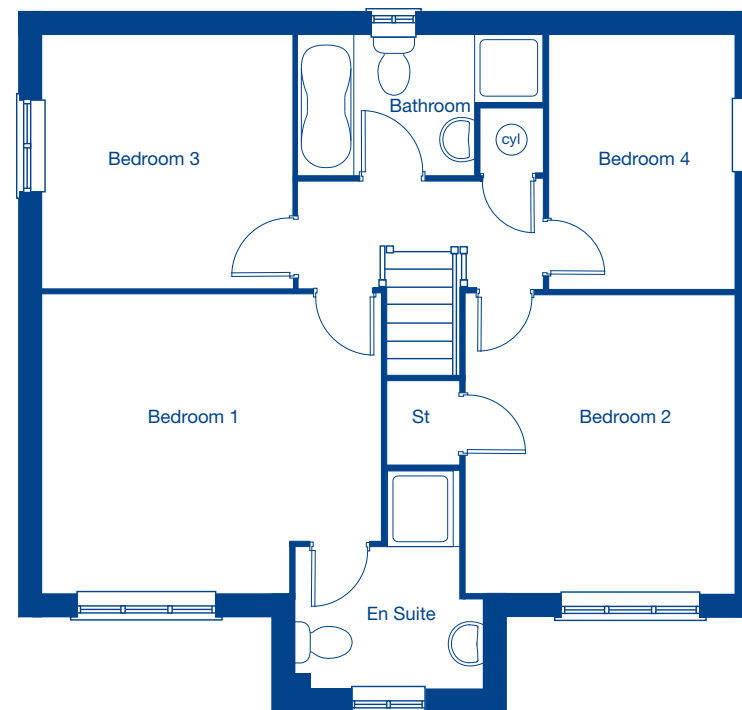


JONES
HOMES



Ground Floor

Living Room	4.26m x 4.24m	14'0" x 13'11"
Kitchen/Family/Dining	8.71m x 2.64m	28'7" x 8'8"
Study	2.68m x 2.27m	8'9" x 7'5"
Detached Single Garage	5.64m x 2.62m	18'6" x 8'7"



First Floor

Bedroom 1	4.26m x 3.79m	14'0" x 12'5"
Bedroom 2	3.79m x 3.37m	12'5" x 11'1"
Bedroom 3	3.16m x 3.05m	10'4" x 10'0"
Bedroom 4	3.16m x 2.30m	10'4" x 7'6"