



at Helmdale

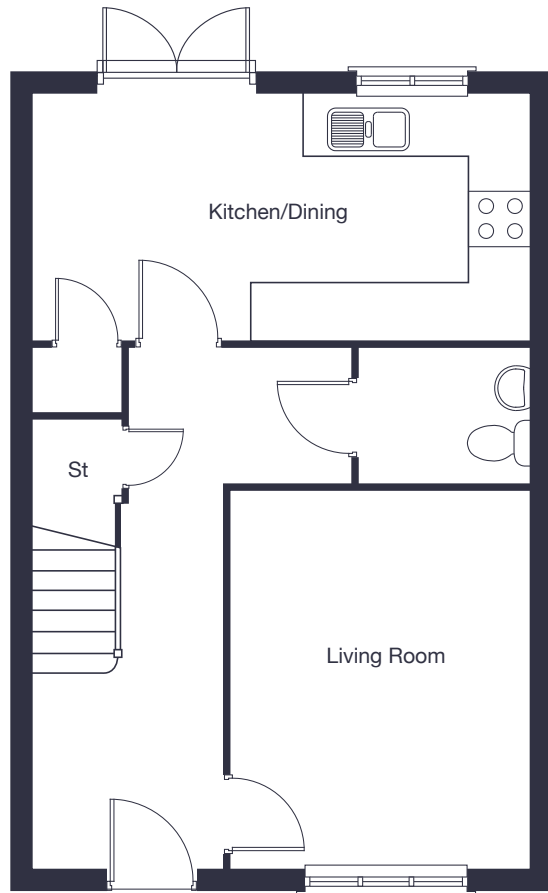
The Keswick

3 bedroom
detached home

jones-homes.co.uk/helmdale

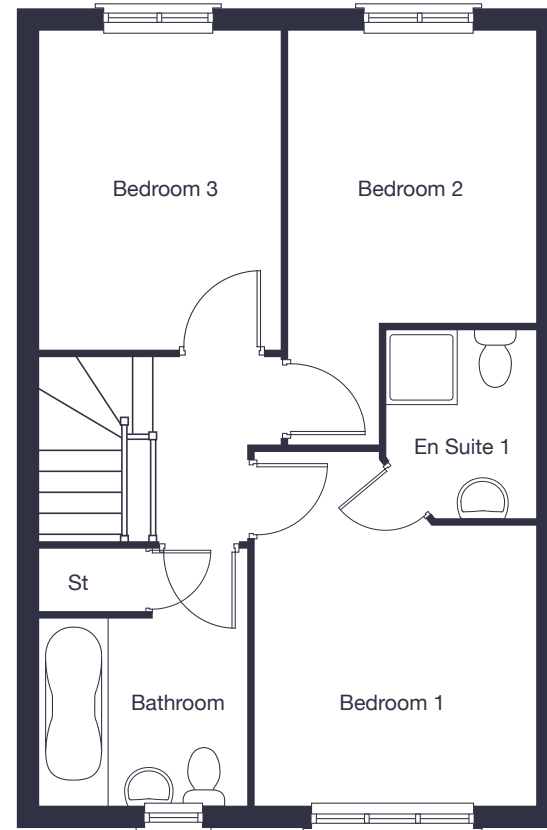
Built with you in mind





Ground Floor

Kitchen/Dining	5.30m x 2.59m	17'5" x 8'6"
Living Room	4.04m x 3.22m	13'3" x 10'7"



First Floor

Bedroom 1	3.79m x 3.02m	12'5" x 9'11"
Bedroom 2	4.46m x 2.65m	14'8" x 8'8"
Bedroom 3	3.40m x 2.56m	11'2" x 8'5"

These floor plans and images are for guidance and illustrative purposes only and do not form part of any contract. All room sizes are approximate to maximum dimensions and some plots may be subject to additional gable or bay windows. Please ask our Sales Advisor for details on specification and elevational styles. Every effort has been taken to ensure these plans are as accurate as possible at time of printing. However, Jones Homes reserves the right to vary details as may be necessary and without notice. JHY8730/March 2023.