



at Helmdale

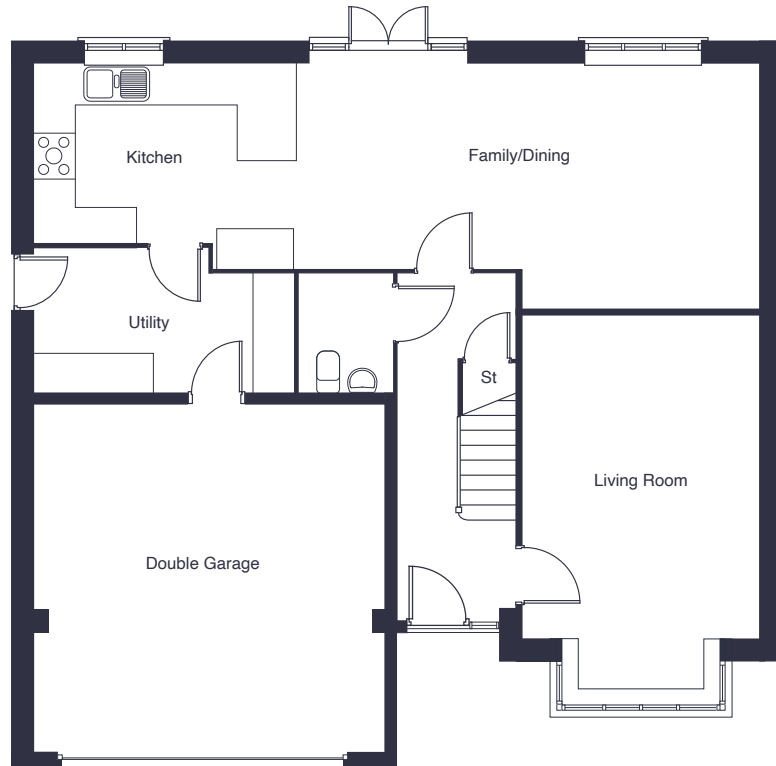
The Latchford

5 bedroom
detached home

jones-homes.co.uk/helmdale

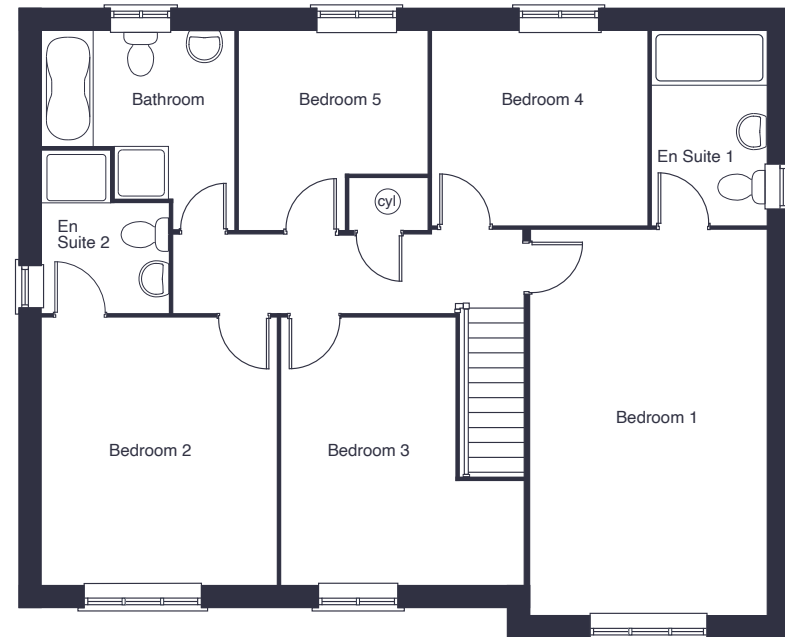
Built with you in mind





Ground Floor

Living Room	5.68m x 3.54m	18'8" x 11'7"
Kitchen/Family/Dining	11.11m x 3.74m	36'6" x 12'3"
Double Garage*	5.43m x 5.38m	17'10" x 17'8"



First Floor

Bedroom 1	5.84m x 3.54m	19'2" x 11.7"
Bedroom 2	4.02m x 3.53m	13'2" x 11'7"
Bedroom 3	4.02m x 3.78m	13'2" x 12'5"
Bedroom 4	3.26m x 2.88m	10'8" x 9'6"
Bedroom 5	2.98m x 2.83m	9'10" x 9'3"

*Please refer to site plan for plot specific garage size.

These floor plans and images are for guidance and illustrative purposes only and do not form part of any contract. All room sizes are approximate to maximum dimensions and some plots may be subject to additional gable or bay windows. Please ask our Sales Advisor for details on specification and elevational styles. Every effort has been taken to ensure these plans are as accurate as possible at time of printing. However, Jones Homes reserves the right to vary details as may be necessary and without notice. JHY8730/March 2023.