



at Bowland Rise

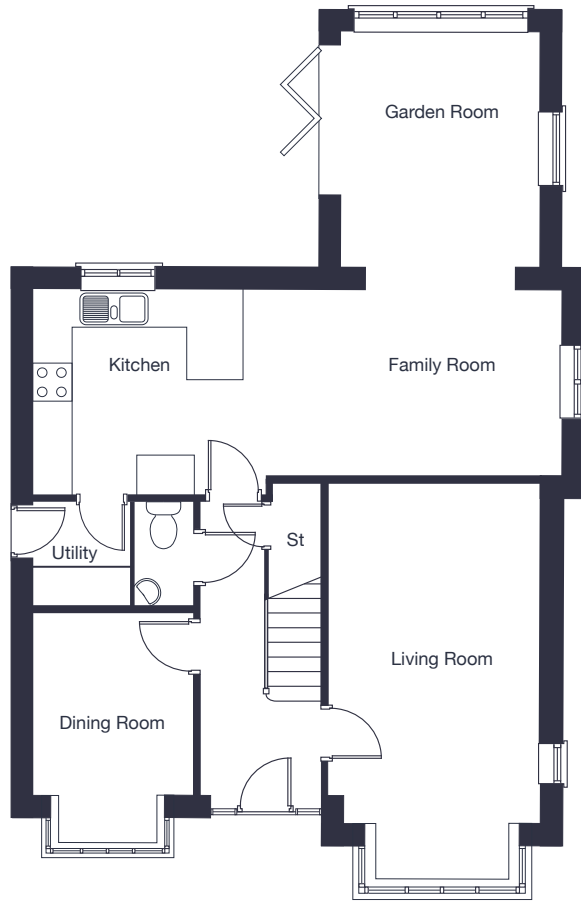
## The Barbridge

4 bedroom  
detached home

[jones-homes.co.uk/bowland-rise](https://jones-homes.co.uk/bowland-rise)

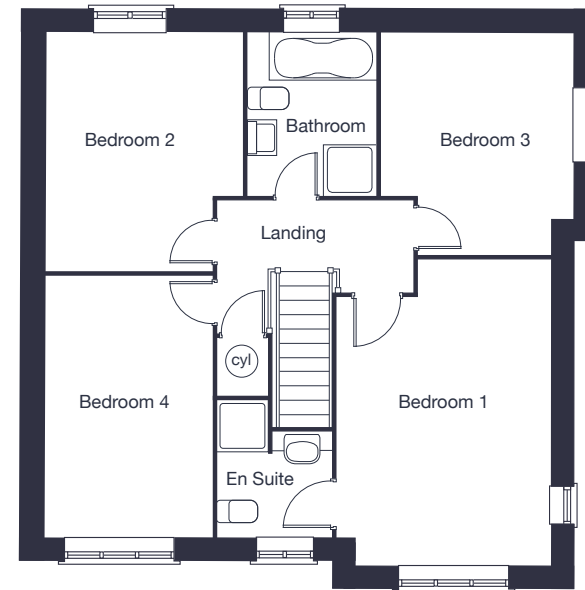
Built with you in mind





### Ground Floor

Living Room	3.34m x 6.15m	10'11" x 20'2"
Dining Room	3.51m x 2.50m	11'6" x 8'3"
Family Room/Kitchen	8.40m x 2.94m	27'7" x 9'8"



### First Floor

Bedroom 1	4.86m x 3.40m	15'11" x 11'2"
Bedroom 2	4.15m x 2.64m	13'8" x 8'8"
Bedroom 3	3.54m x 3.04m	11'8" x 10'
Bedroom 4	3.79m x 3.13m	12'6" x 10'2"

These floor plans and images are for guidance and illustrative purposes only and do not form part of any contract. All room sizes are approximate to maximum dimensions and some plots may be subject to additional gable or bay windows. Please ask our Sales Advisor for details on specification and plot specific street scenes. Every effort has been taken to ensure these plans are as accurate as possible at time of printing. However, Jones Homes reserves the right to vary details as may be necessary and without notice.