



at Bowland Rise

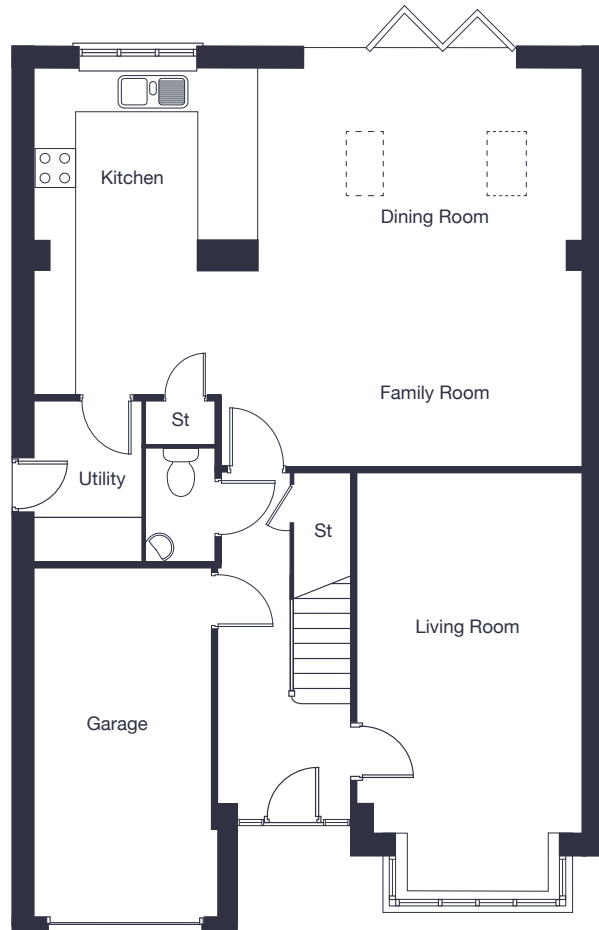
The Bentley

4 bedroom
detached home

jones-homes.co.uk/bowland-rise

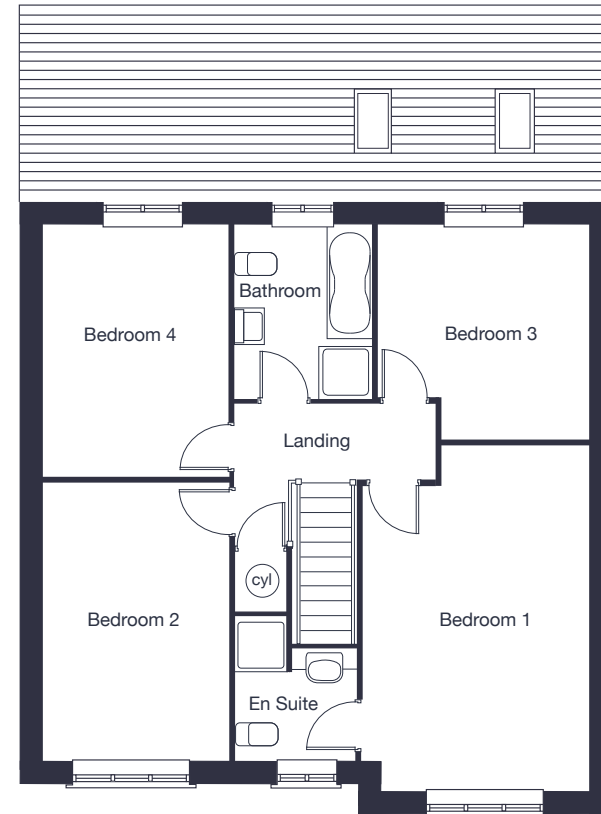
Built with you in mind





Ground Floor

Living Room	3.34m x 6.15m	10'11" x 20'2"
Kitchen/Dining/Family Room	8.20m x 5.94m	26'11" x 19'6"



First Floor

Bedroom 1	5.20m x 3.40m	17'1" x 11'2"
Bedroom 2	4.15m x 2.79m	13'8" x 9'2"
Bedroom 3	3.19m x 3.18m	10'6" x 10'5"
Bedroom 4	3.80m x 2.79m	12'6" x 9'2"

--- Skylights

These floor plans and images are for guidance and illustrative purposes only and do not form part of any contract. All room sizes are approximate to maximum dimensions and some plots may be subject to additional gable or bay windows. Please ask our Sales Advisor for details on specification and plot specific street scenes. Every effort has been taken to ensure these plans are as accurate as possible at time of printing. However, Jones Homes reserves the right to vary details as may be necessary and without notice.