



at Bowland Rise

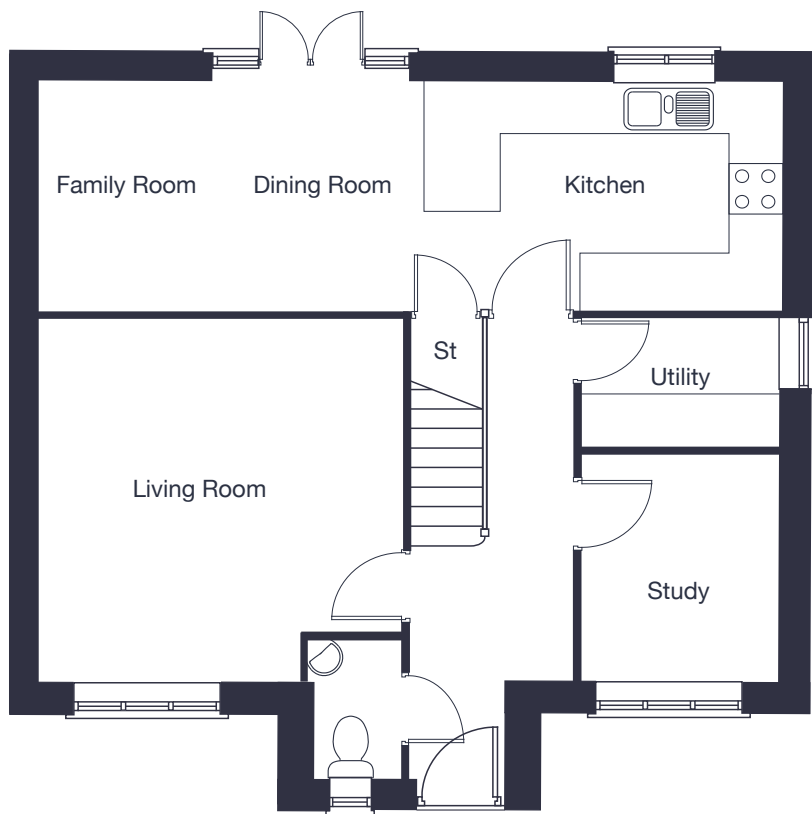
The Hollin

4 bedroom
detached home

jones-homes.co.uk/bowland-rise

Built with you in mind





Ground Floor

Living Room	4.28m x 4.24m	14'1" x 13'11"
Kitchen/Dining/Family Room	8.71m x 2.64m	28'7" x 8'8"
Study	2.67m x 2.26m	8'9" x 7'5"



First Floor

Bedroom 1	4.25m x 3.79m	14' x 12'5"
Bedroom 2	3.79m x 3.37m	12'5" x 11'1"
Bedroom 3	3.15m x 3.05m	10'4" x 10'
Bedroom 4	3.15m x 2.29m	10'4" x 7'6"

These floor plans and images are for guidance and illustrative purposes only and do not form part of any contract. All room sizes are approximate to maximum dimensions and some plots may be subject to additional gable or bay windows. Please ask our Sales Advisor for details on specification and plot specific street scenes. Every effort has been taken to ensure these plans are as accurate as possible at time of printing. However, Jones Homes reserves the right to vary details as may be necessary and without notice.