



at Bowland Rise

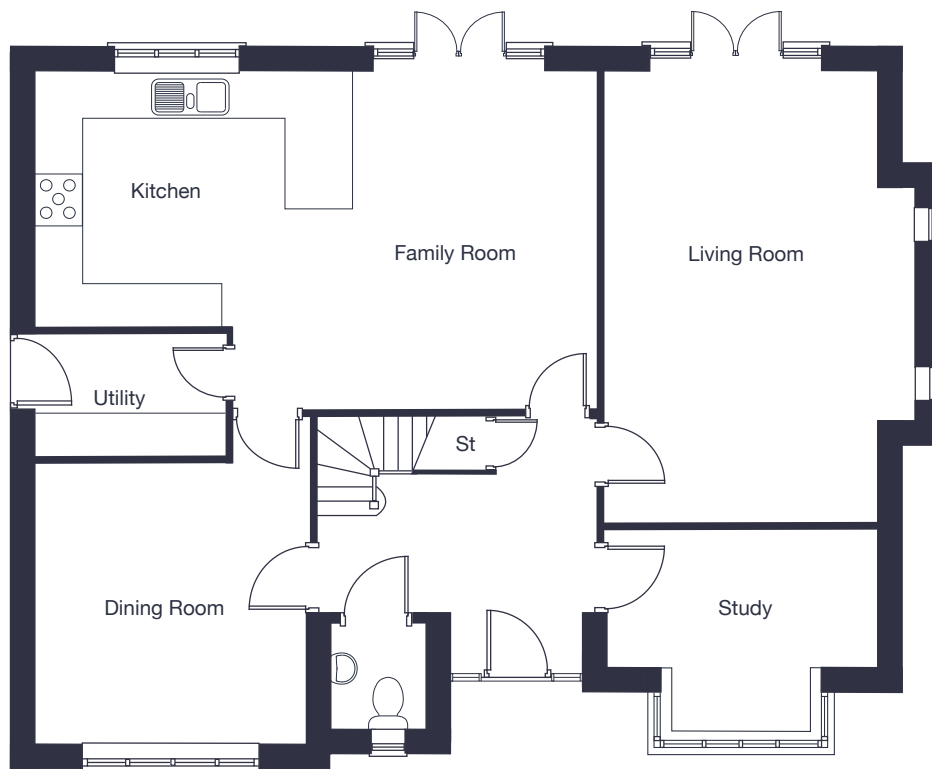
## The Knightsbridge

5 bedroom  
detached home

[jones-homes.co.uk/bowland-rise](https://jones-homes.co.uk/bowland-rise)

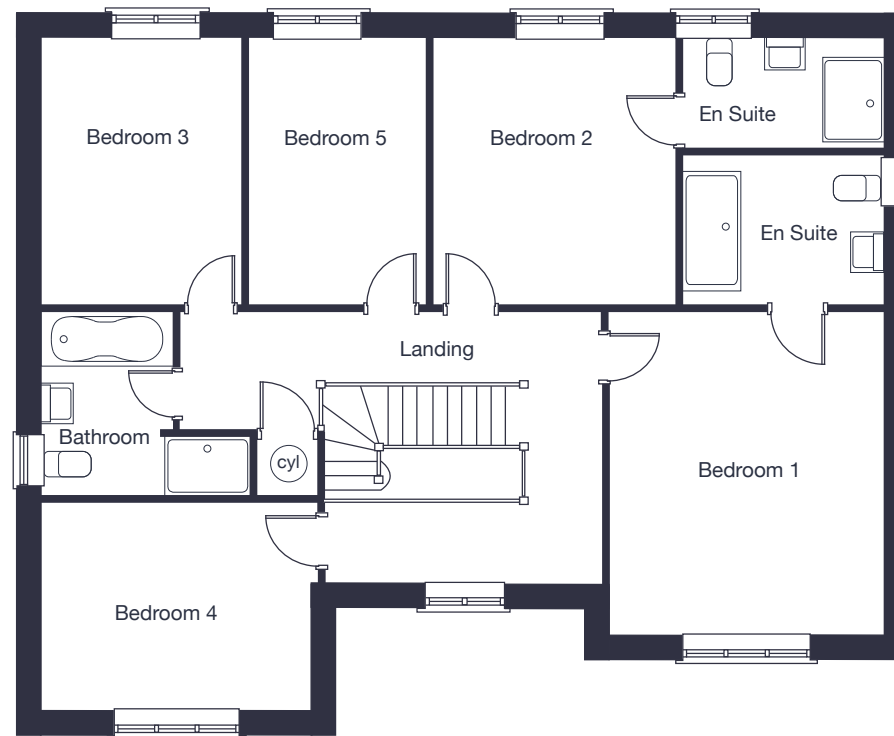
Built with you in mind





## Ground Floor

Living Room	6.09m x 3.66m	20' x 12'
Kitchen/Family Room	7.59m x 4.51m	24'11" x 14'10"
Dining Room	3.80m x 3.66m	12'6" x 12'
Study	3.66m x 2.61m	12' x 8'7"



## First Floor

Bedroom 1	4.36m x 3.66m	14'4" x 12'
Bedroom 2	3.62m x 3.28m	11'11" x 10'9"
Bedroom 3	3.62m x 2.71m	11'11" x 8'10"
Bedroom 4	3.66m x 2.78m	12' x 9'2"
Bedroom 5	3.62m x 2.43m	11'11" x 8'

These floor plans and images are for guidance and illustrative purposes only and do not form part of any contract. All room sizes are approximate to maximum dimensions and some plots may be subject to additional gable or bay windows. Please ask our Sales Advisor for details on specification and plot specific street scenes. Every effort has been taken to ensure these plans are as accurate as possible at time of printing. However, Jones Homes reserves the right to vary details as may be necessary and without notice.