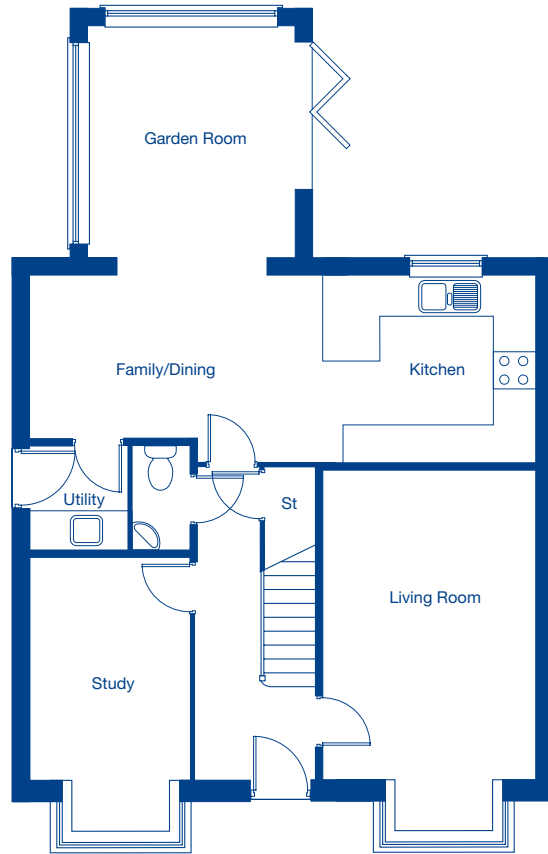


Kingsfield Park

The Bowdon – 5 bedroom detached home

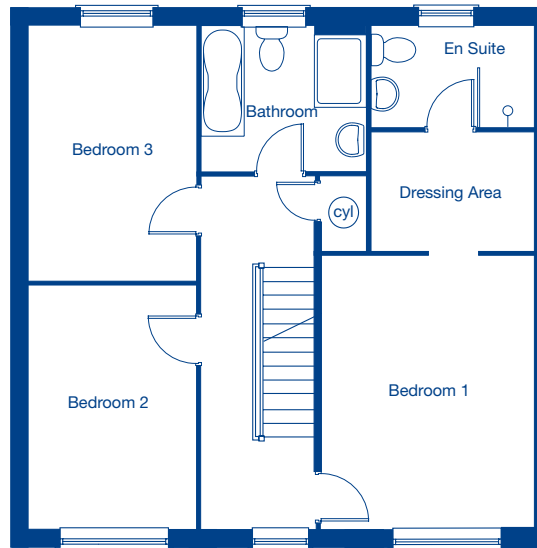


**JONES**  
HOMES



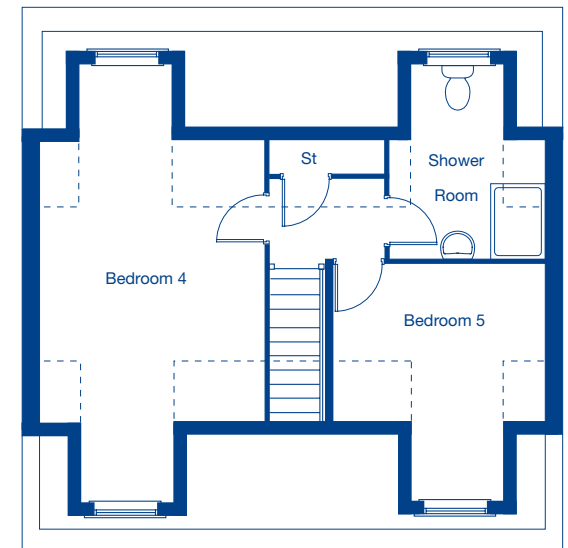
**Ground Floor**

Living Room	5.59m x 3.34m	18'4" x 10'11"
Kitchen/Family/Dining	8.05m x 2.95m	26'5" x 9'8"
Garden Room	3.69m x 3.14m	12'1" x 10'4"
Study	4.19m x 2.51m	13'9" x 8'3"



**First Floor**

Bedroom 1	4.47m x 3.34m	14'8" x 10'11"
Dressing Area	2.57m x 1.78m	8'5" x 5'10"
Bedroom 2	3.98m x 2.64m	13'1" x 8'8"
Bedroom 3	3.98m x 2.64m	13'1" x 8'8"



**Second Floor**

Bedroom 4	7.07m x 3.59m	23'2" x 11'9"
Bedroom 5	3.77m x 3.34m	12'4" x 10'11"

- - - Restricted head height

These floor plans and CGI are for guidance and illustrative purposes only and do not form part of any contract. All room sizes are approximate to maximum dimensions and some plots may be subject to additional gable or bay windows. Please ask our Sales Advisor for details on specification and plot specific street scenes. Every effort has been taken to ensure these plans are as accurate as possible at time of printing. However, Jones Homes reserves the right to vary details as may be necessary and without notice. JHNW1304/June 2018.