



at Shurland Park

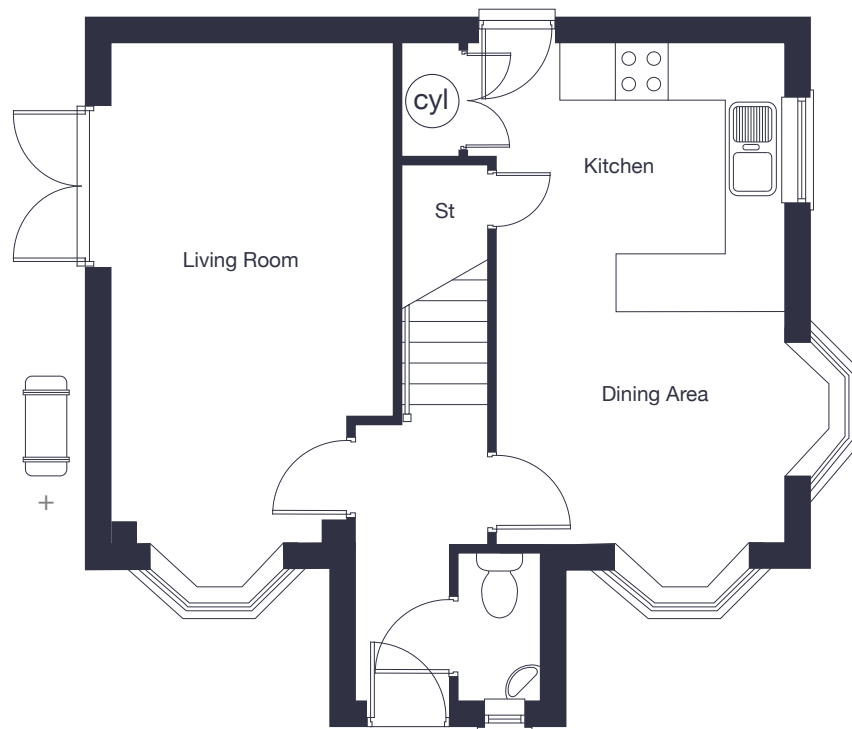
The Huxley A

3 bedroom
detached home

jones-homes.co.uk/shurland-park

Built with you in mind





Ground Floor

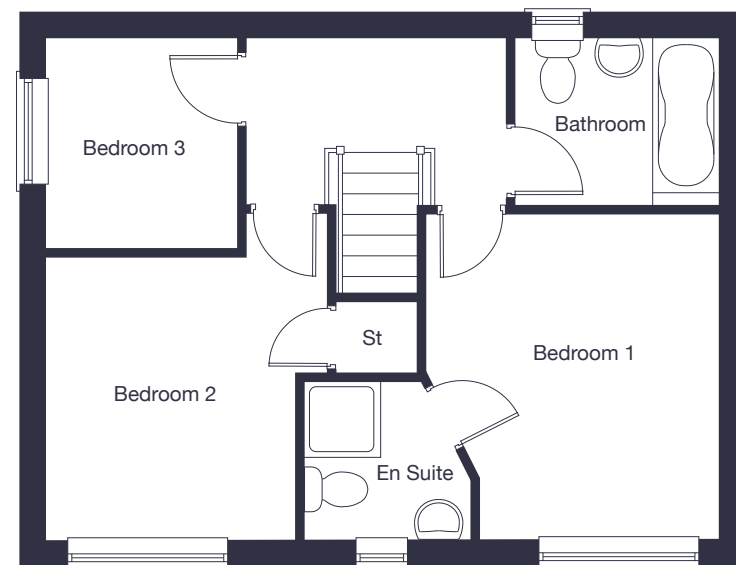
Kitchen	3.30m* x 2.90m	10'11" x 9'6"
Dining Area	3.14m^ x 2.55m^	10'4" x 8'4"
Living Room	3.05m* x 5.45m^	10'0" x 17'11"

^ Not including bay.

* Denotes maximum dimension.

+ Air source heat pump to plots 76 & 142 only. Check exact location with our Sales Advisor.

Floor plans, CGI and image are for guidance and illustrative purposes only and do not form part of any contract. All room sizes are approximate to maximum dimensions and some plots may be subject to additional gable or bay windows. Please ask our Sales Advisor for details on specification and plot specific street scenes. Every effort has been taken to ensure these plans are as accurate as possible at time of printing. However, Jones Homes reserves the right to vary details as may be necessary and without notice. JHS12912/March 2025.



First Floor

Bedroom 1	3.14m* x 3.55m	10'4" x 11'8"
Bedroom 2	3.05m* x 3.09m	10'0" x 10'2"
Bedroom 3	2.08m x 2.27m	6'10" x 7'5"