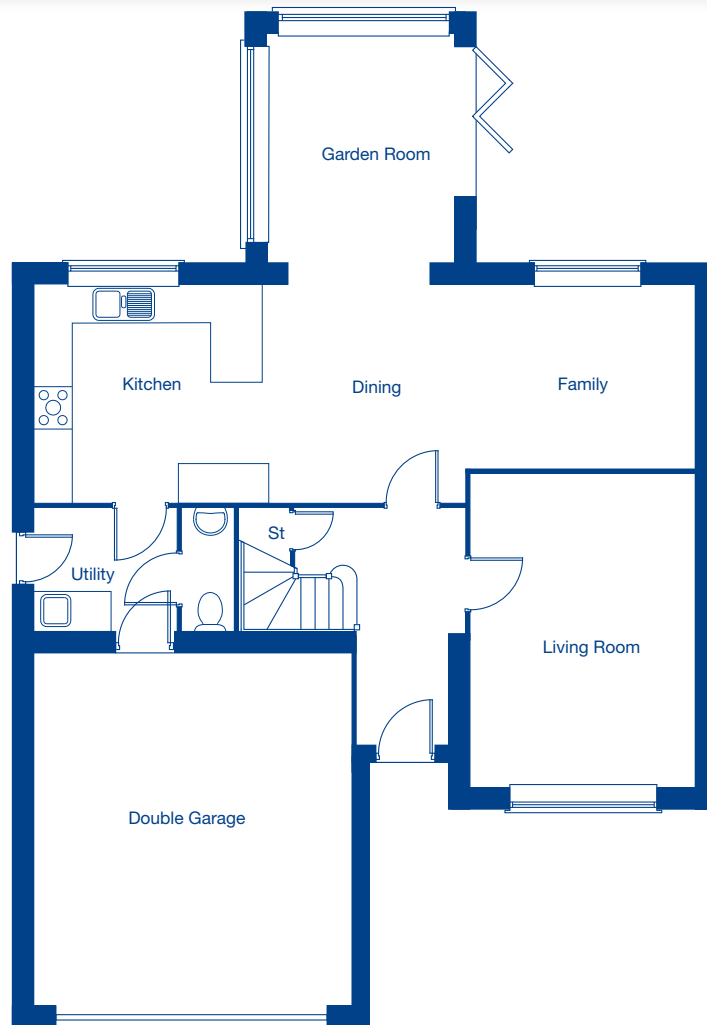


Kingsfield Park

The Stratton II – 5 bedroom detached home



**JONES**  
HOMES

**Ground Floor**

Living Room	5.10m x 3.63m	16'9" x 11'11"
Kitchen/Family/Dining	10.82m x 3.53m	35'6" x 11'7"
Garden Room	3.69m x 3.14m	12'1" x 10'4"
Double Garage	5.89m x 5.20m	19'4" x 17'1"

**First Floor**

Bedroom 1	4.99m x 3.63m	16'4" x 11'11"
Bedroom 2	5.83m x 3.75m	19'2" x 12'4"
Bedroom 3	3.44m x 2.48m	11'3" x 8'2"
Bedroom 4	3.03m x 2.48m	9'11" x 8'2"
Bedroom 5	2.56m x 2.48m	8'5" x 8'2"

— — — Restricted head height

These floor plans and CGI are for guidance and illustrative purposes only and do not form part of any contract. All room sizes are approximate to maximum dimensions and some plots may be subject to additional gable or bay windows. Please ask our Sales Advisor for details on specification and plot specific street scenes. Every effort has been taken to ensure these plans are as accurate as possible at time of printing. However, Jones Homes reserves the right to vary details as may be necessary and without notice. JHNW1304/July 2018.