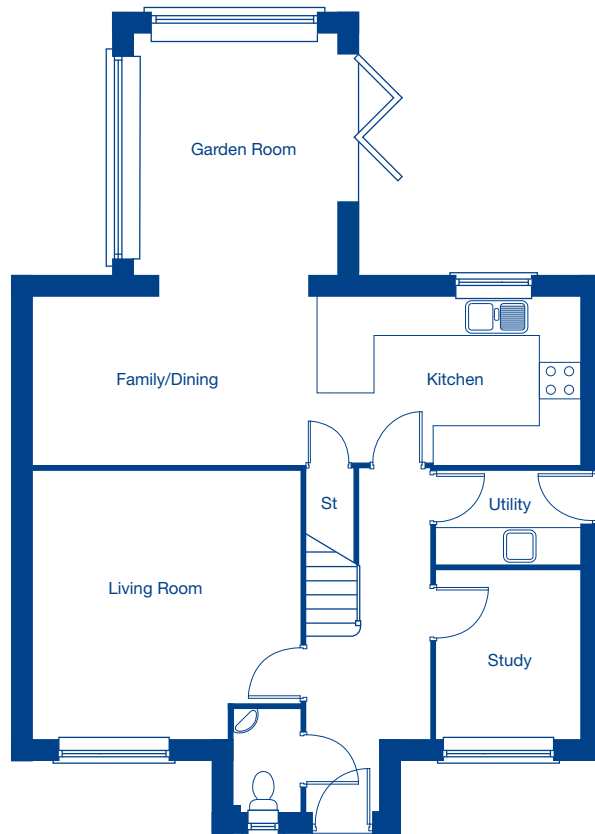


Kingsfield Park

The Hollin – 4 bedroom detached home

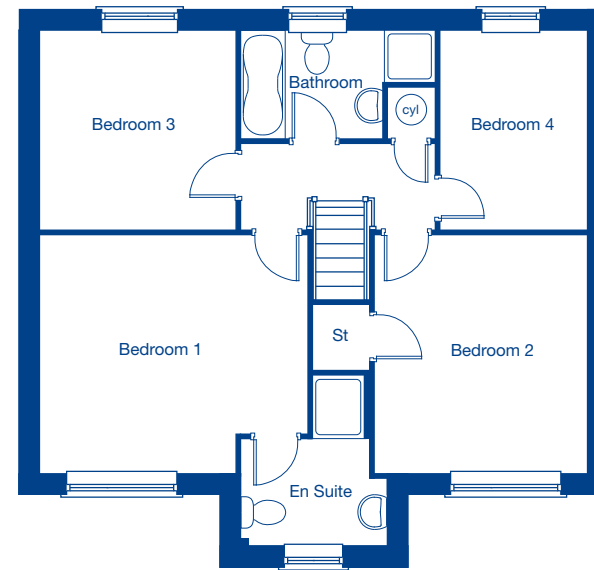


JONES
HOMES



Ground Floor

Living Room	4.26m x 4.24m	14'0" x 13'11"
Kitchen/Family/Dining	8.71m x 2.64m	28'7" x 8'8"
Garden Room	3.69m x 3.14m	12'1" x 10'4"
Study	2.86m x 2.27m	8'9" x 7'5"



First Floor

Bedroom 1	4.26m x 3.79m	14'0" x 12'5"
Bedroom 2	3.35m x 3.79m	11'0" x 12'5"
Bedroom 3	3.16m x 3.10m	10'4" x 10'2"
Bedroom 4	3.16m x 2.30m	10'4" x 7'7"