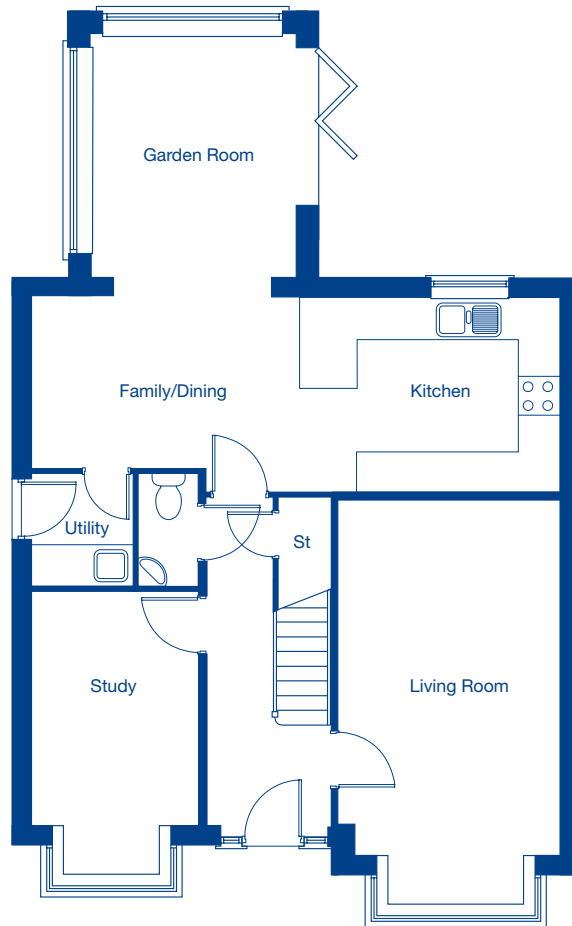


Kingsfield Park

The Bayswater – 4 bedroom detached home

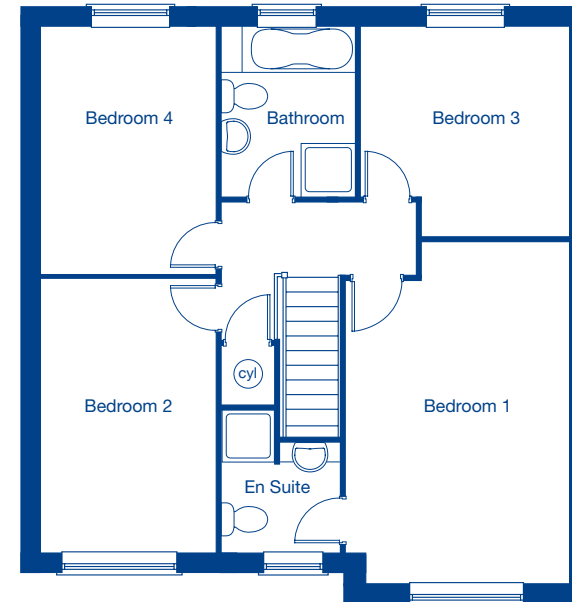


JONES
HOMES



Ground Floor

Living Room	6.15m x 3.34m	20'2" x 10'11"
Kitchen/Family/Dining	8.05m x 2.94m	26'5" x 9'8"
Garden Room	3.69m x 3.14m	12'1" x 10'4"
Study	4.16m x 2.51m	13'8" x 8'3"



First Floor

Bedroom 1	5.21m x 3.41m	17'1" x 11'2"
Bedroom 2	4.16m x 2.64m	13'8" x 8'8"
Bedroom 3	3.19m x 3.19m	10'6" x 10'6"
Bedroom 4	3.80m x 2.64m	12'6" x 8'8"