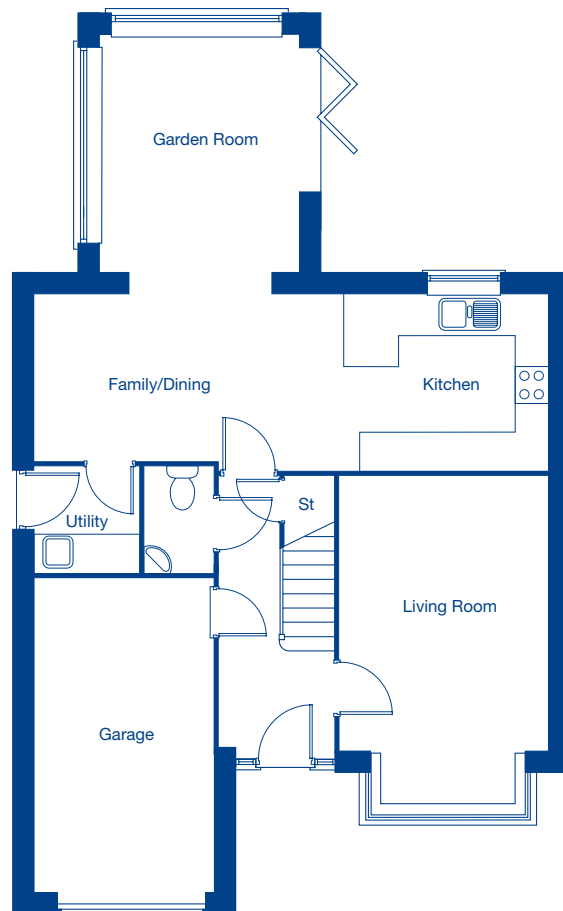


Kingsfield Park

The Davenham – 4 bedroom detached home

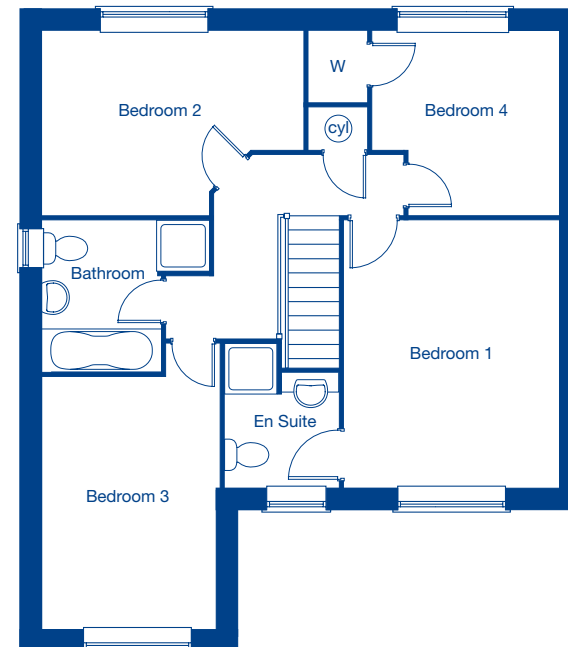


JONES
HOMES



Ground Floor

Living Room	5.00m x 3.34m	16'5" x 10'11"
Kitchen/Family/Dining	8.18m x 2.75m	26'10" x 9'0"
Garden Room	3.69m x 3.14m	12'1" x 10'4"
Garage	5.21m x 2.86m	17'1" x 9'5"



First Floor

Bedroom 1	4.18m x 3.41m	13'9" x 11'2"
Bedroom 2	4.12m x 2.88m	13'6" x 9'5"
Bedroom 3	3.99m x 2.81m	13'1" x 9'3"
Bedroom 4	2.95m x 2.87m	9'8" x 9'5"