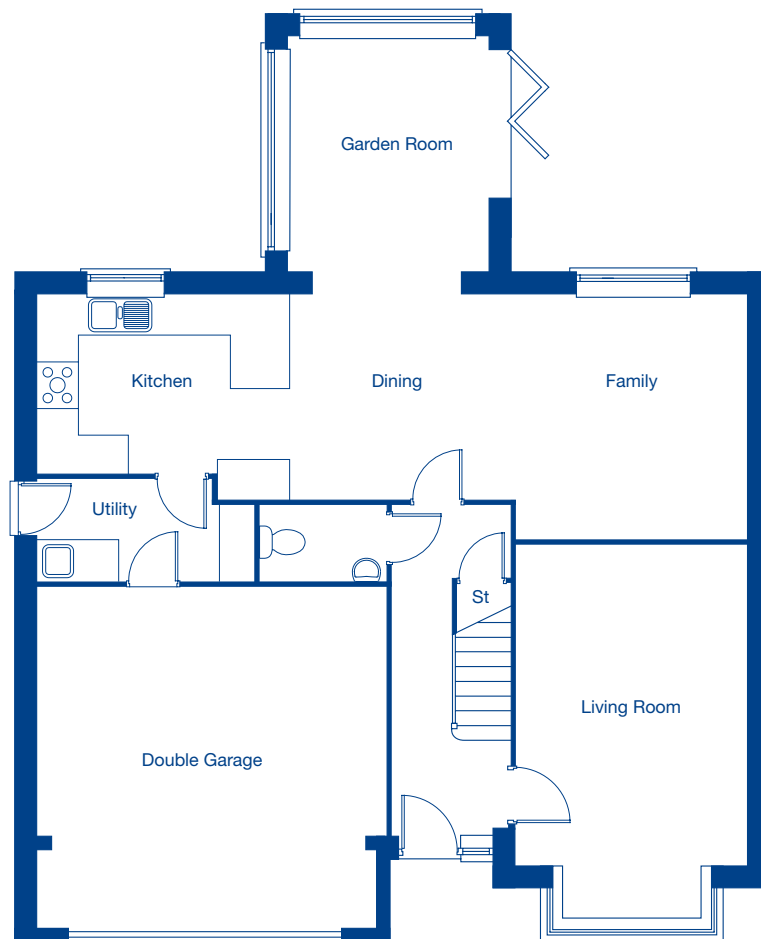


Kingsfield Park

The Latchford II – 5 bedroom detached home

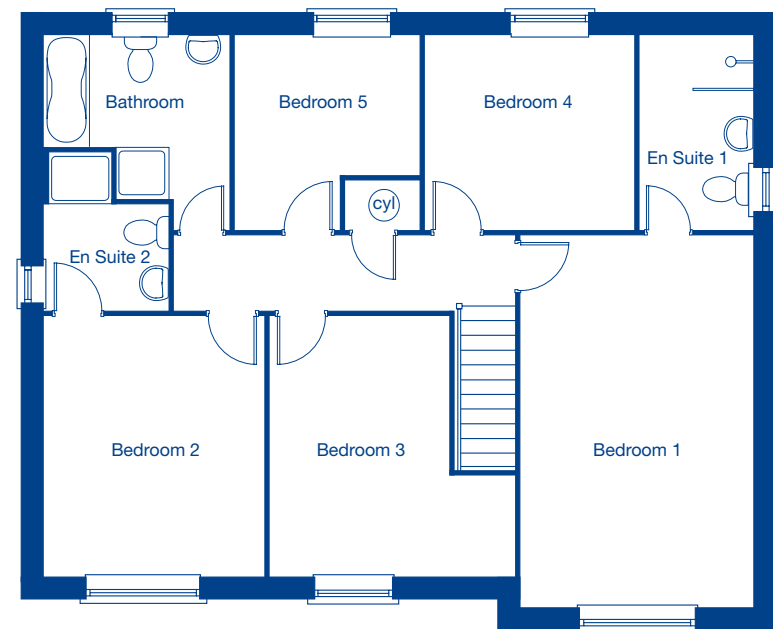


JONES
HOMES



Ground Floor

Living Room	5.68m x 3.54m	18'8" x 11'7"
Kitchen/Dining/Family	11.12m x 3.74m	36'6" x 12'3"
Garden Room	3.69m x 3.14m	12'1" x 10'4"
Double Garage	5.51m x 5.38m	18'1" x 17'8"



First Floor

Bedroom 1	5.75m x 3.54m	18'10" x 11'7"
Bedroom 2	4.02m x 3.53m	13'2" x 11'7"
Bedroom 3	4.02m x 3.79m	13'2" x 12'5"
Bedroom 4	3.26m x 2.99m	10'8" x 9'10"
Bedroom 5	2.99m x 2.86m	9'10" x 9'5"