



at Shurland Park

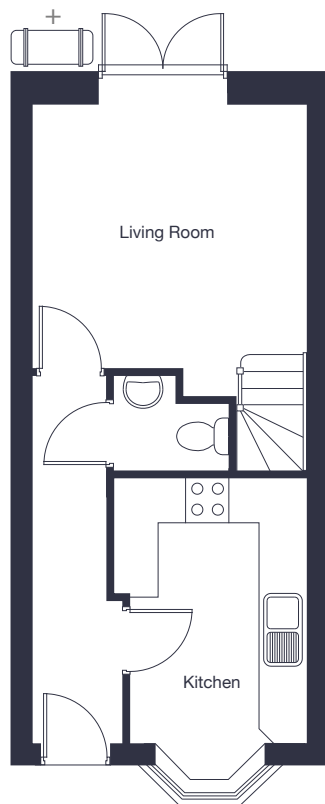
## The Sutton A & B

2 bedroom  
mews home

[jones-homes.co.uk/shurland-park](https://jones-homes.co.uk/shurland-park)

Built with you in mind

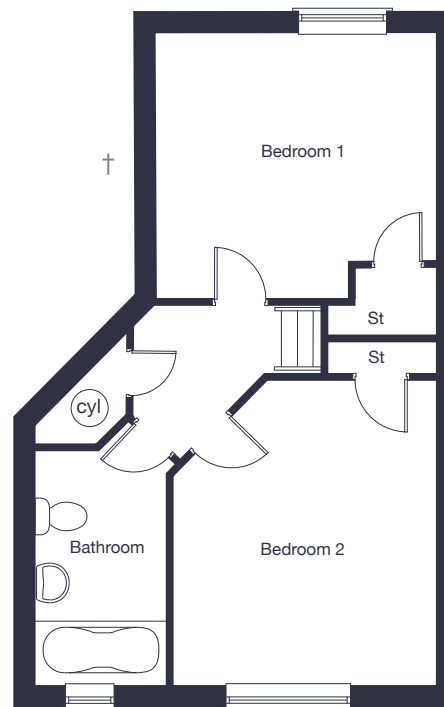




## Ground Floor

Kitchen	2.56m* x 3.54m (plus bay)	8'5"* x 11'8" (plus bay)
Living Room	3.62m x 4.00m	11'10" x 13'1"

## The Sutton A



## First Floor Sutton A

Bedroom 1	3.62m* x 4.05m*	11'6"* x 13'3"*
Bedroom 2	3.48m* x 3.54m*	11'5"* x 11'8"

## The Sutton B



## First Floor Sutton B

Bedroom 1	3.48m* x 4.05m*	11'5"* x 13'3"*
Bedroom 2	3.62m x 3.54m	11'10" x 11'8"

\* Denotes maximum dimension.

+ Indicative position of external Air Source Heat Pump. Please ask our Sales Advisor for plot specific position.

† Handed Sutton has different first floor layout. Please ask our Sales Advisor for details.

Floor plans, CGI and image are for guidance and illustrative purposes only and do not form part of any contract. All room sizes are approximate to maximum dimensions and some plots may be subject to additional gable or bay windows. Please ask our Sales Advisor for details on specification and plot specific street scenes. Every effort has been taken to ensure these plans are as accurate as possible at time of printing. However, Jones Homes reserves the right to vary details as may be necessary and without notice. JHS13607/August 2025.