



at Shurland Park

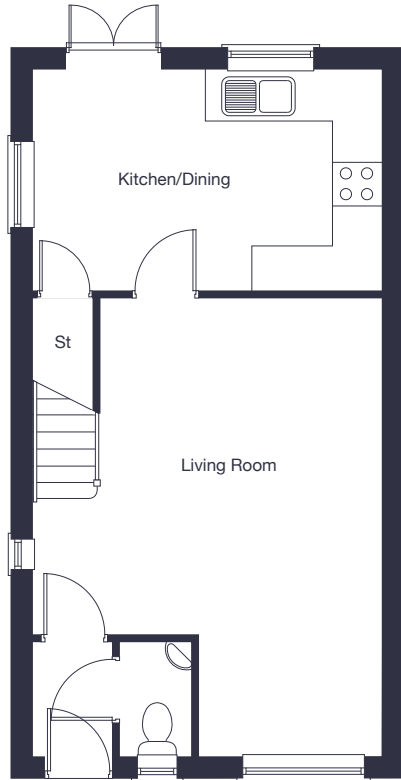
## The Birch

3 bedroom detached  
or mews home

[jones-homes.co.uk/shurland-park](https://jones-homes.co.uk/shurland-park)

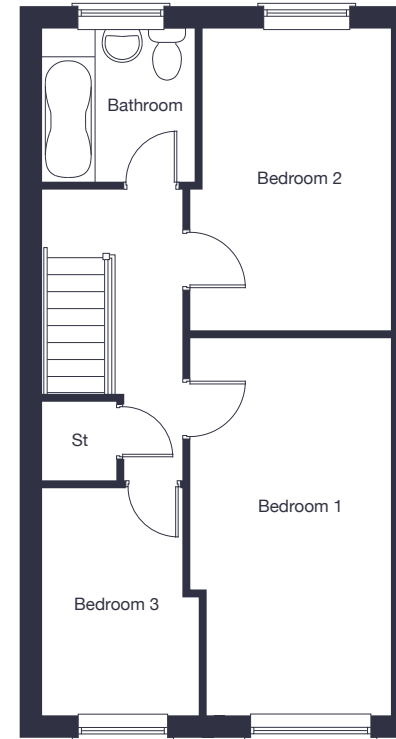
Built with you in mind





### Ground Floor

Kitchen/Dining	4.59m x 2.87m	15'1" x 9'5"
Living Room	4.59m* x 6.10m	15'1"* x 20'0"



### First Floor

Bedroom 1	5.00m* x 2.65m*	16'5" x 8'8"*
Bedroom 2	3.98m x 2.65m*	13'1" x 8'8"*
Bedroom 3	3.02m x 2.09m*	9'11" x 6'10"*

\* Denotes maximum dimension.

Floor plans, CGI and image are for guidance and illustrative purposes only and do not form part of any contract. All room sizes are approximate to maximum dimensions and some plots may be subject to additional gable or bay windows. Please ask our Sales Advisor for details on specification and plot specific street scenes. Every effort has been taken to ensure these plans are as accurate as possible at time of printing. However, Jones Homes reserves the right to vary details as may be necessary and without notice. JHS9053/April 2023.