



at Shurland Park

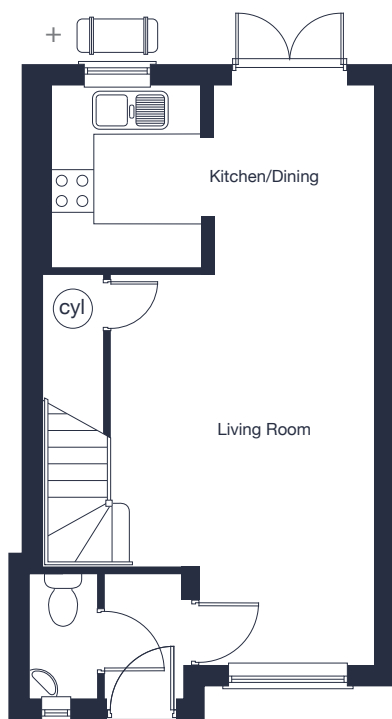
The Cranford A & B

2 bedroom
mews home

jones-homes.co.uk/shurland-park

Built with you in mind

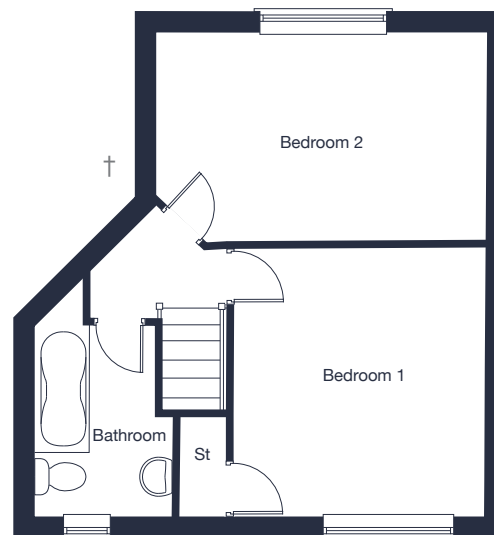




Ground Floor

Kitchen/Dining	4.34m x 2.53m	14'3" x 8'4"
Living Room	5.29m* x 3.56m*	17'4"* x 11'8"*

The Cranford A



First Floor Cranford A

Bedroom 1	3.60m x 3.35m	11'10" x 11'0"
Bedroom 2	4.40m x 2.83m	14'5" x 9'4"

The Cranford B



First Floor Cranford B

Bedroom 1	3.58m x 3.35m	11'9" x 11'0"
Bedroom 2	4.19m x 2.83m	13'9" x 9'4"

* Maximum Dimension

† Handed Cranford has different first floor layout. Please ask our Sales Advisor for details.

+ Indicative position of external Air Source Heat Pump. Please ask our Sales Advisor for plot specific position.

Floor plans, CGI and image are for guidance and illustrative purposes only and do not form part of any contract. All room sizes are approximate to maximum dimensions and some plots may be subject to additional gable or bay windows. Please ask our Sales Advisor for details on specification and plot specific street scenes. Every effort has been taken to ensure these plans are as accurate as possible at time of printing. However, Jones Homes reserves the right to vary details as may be necessary and without notice. JHS13149/June 2025.