



at Shurland Park

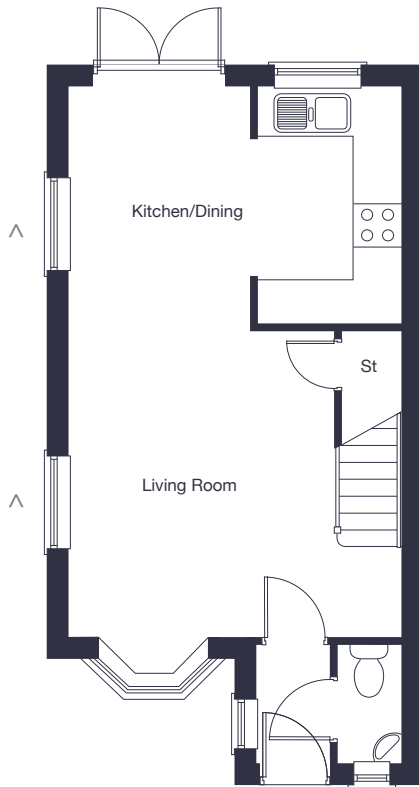
## The Langley

3 bedroom  
semi-detached home

[jones-homes.co.uk/shurland-park](https://jones-homes.co.uk/shurland-park)

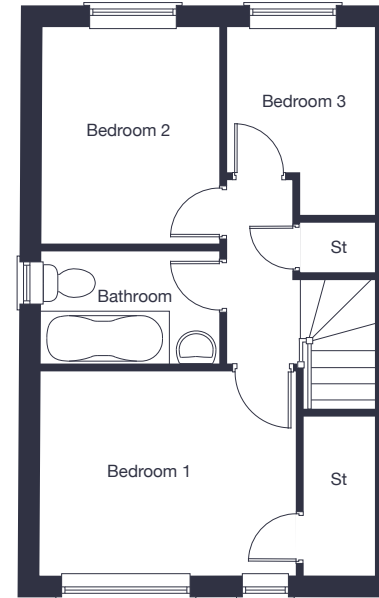
Built with you in mind





### Ground Floor

Kitchen/Dining	4.40m x 3.23m	14'5" x 10'7"
Living Room	3.37m x 4.08m (plus bay)	11'8" x 13'5" (plus bay)



### First Floor

Bedroom 1	3.42m x 2.70m	11'3" x 8'10"
Bedroom 2	2.38m x 2.90m	7'10" x 9'6"
Bedroom 3	1.93m x 2.55m	6'4" x 8'4"

^ Windows to plots 31, 32, 50, 54 & 130 only.

Floor plans, CGI and image are for guidance and illustrative purposes only and do not form part of any contract. All room sizes are approximate to maximum dimensions and some plots may be subject to additional gable or bay windows. Please ask our Sales Advisor for details on specification and plot specific street scenes. Every effort has been taken to ensure these plans are as accurate as possible at time of printing. However, Jones Homes reserves the right to vary details as may be necessary and without notice. JHS10972/January 2024.