



at Shurland Park

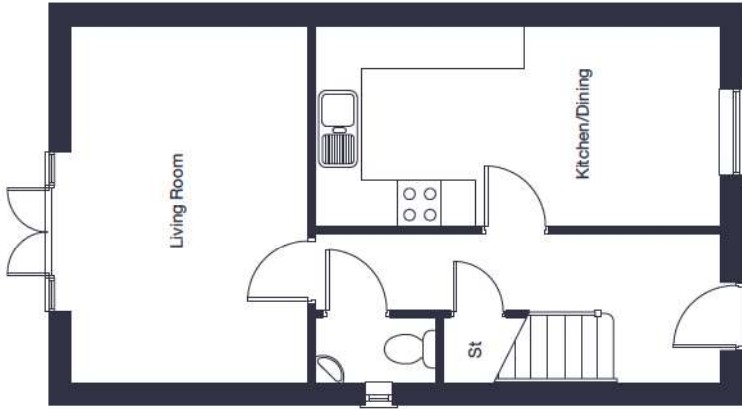
The Shurland

3 bedroom
semi-detached home

jones-homes.co.uk/shurland-park

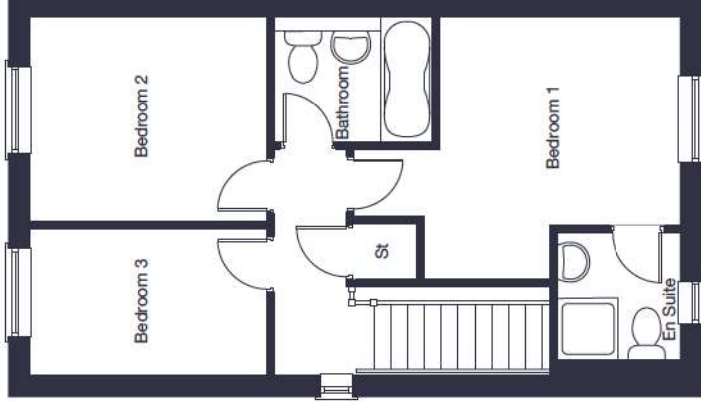
Built with you in mind





Ground Floor

Kitchen/Dining	5.44m x 2.71m	17'10" x 8'11"
Living Room	4.81m x 3.15m	15'9" x 10'4"



First Floor

Bedroom 1	3.56m* x 3.19m	11'8" x 10'5"
Bedroom 2	3.15m x 2.78m	10'4" x 9'2"
Bedroom 3	3.15m x 1.94m	10'4" x 6'4"

* Denotes maximum dimension.

Floor plans, CGI and image are for guidance and illustrative purposes only and do not form part of any contract. All room sizes are approximate to maximum dimensions and some plots may be subject to additional gable or bay windows. Please ask our Sales Advisor for details on specification and plot specific street scenes. Every effort has been taken to ensure these plans are as accurate as possible at time of printing. However, Jones Homes reserves the right to vary details as may be necessary and without notice. JHS6209/March 2023.