



Plots on this development have been designed for individuality, therefore materials and design will vary. CGI shows Plot 45. Please ask our Sales Advisor for plot specific details.

## The Kew – Plot 20

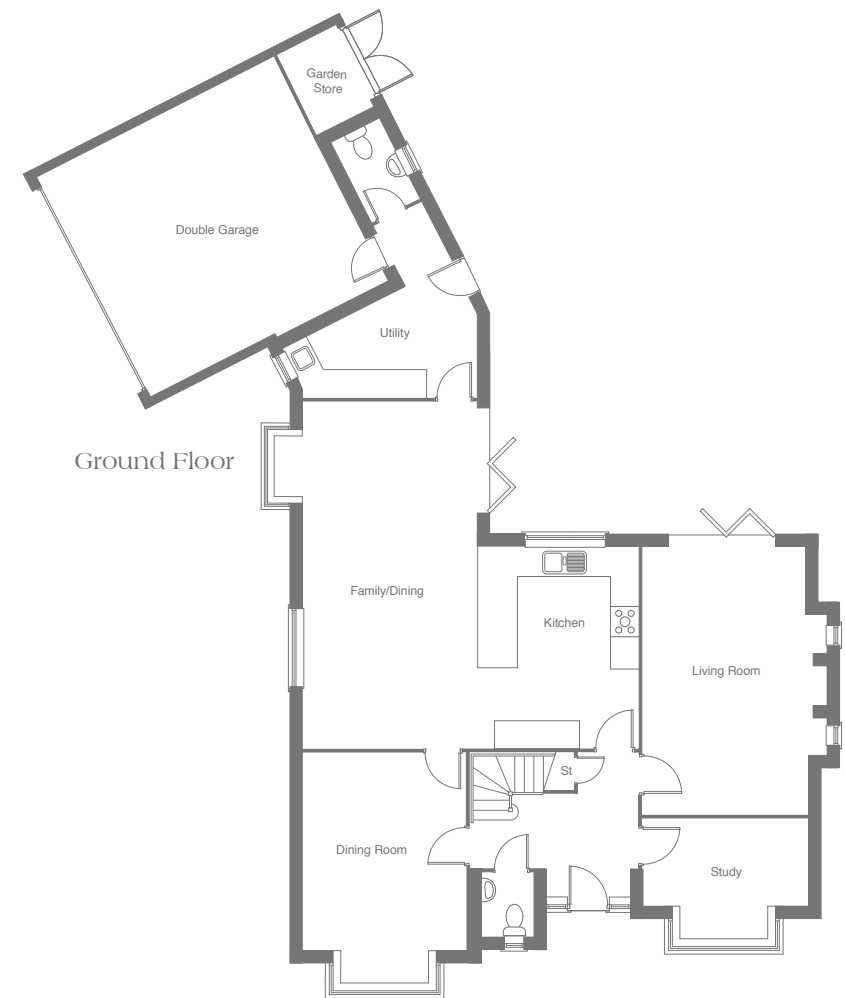
5 bedroom detached home with integral double garage, spacious open plan family kitchen with separate dining room, luxury living room, study, utility and en suites to both bedroom 1 & 2.

### Ground Floor

Living Room	6.10m x 4.11m	20'0" x 13'6"
Kitchen/Family/Dining	7.86m x 7.59m	25'9" x 24'11"
Dining Room	5.16m x 3.66m	16'11" x 12'0"
Study	3.66m x 2.59m	12'0" x 8'6"
Double Garage	6.00m x 5.64m	19'8" x 18'6"

### First Floor

Bedroom 1	4.37m x 3.66m	14'4" x 12'0"
Bedroom 2	3.62m x 3.28m	11'11" x 10'9"
Bedroom 3	3.62m x 2.71m	11'11" x 8'11"
Bedroom 4	3.66m x 2.78m	12'0" x 9'2"
Bedroom 5	3.62m x 2.44m	11'11" x 8'0"



### First Floor

