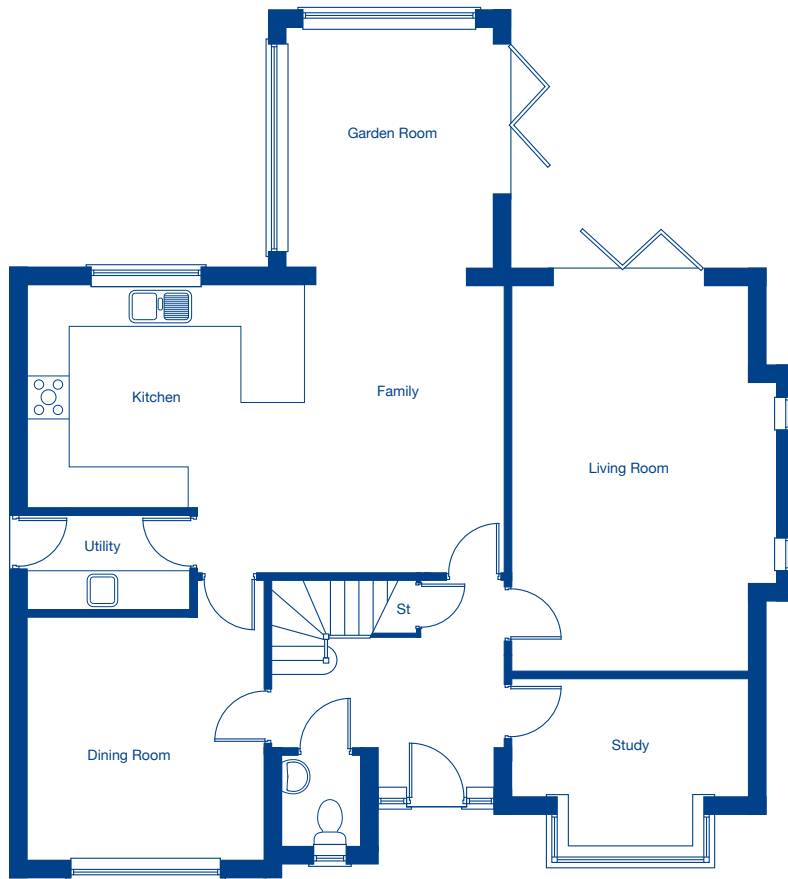


Westlow Heath

The Knightsbridge II – 4 bedroom detached house

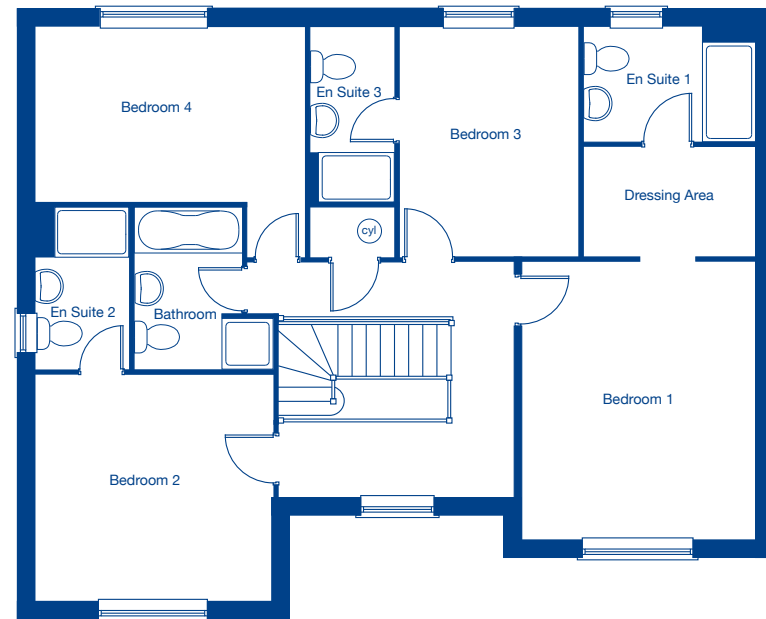


JONES
HOMES



Ground Floor

Living Room	6.10m x 3.66m	20'0" x 12'0"
Kitchen/Family	7.59m x 4.52m	24'11" x 14'10"
Garden Room	3.69m x 3.14m	12'1" x 10'4"
Dining Room	3.81m x 3.66m	12'6" x 12'0"
Study	3.66m x 2.62m	12'0" x 8'7"



First Floor

Bedroom 1	4.37m x 3.66m	14'4" x 12'0"
Bedroom 2	3.73m x 3.56m	12'3" x 11'8"
Bedroom 3	3.62m x 2.85m	11'11" x 9'4"
Bedroom 4	4.25m x 2.74m	13'11" x 9'0"