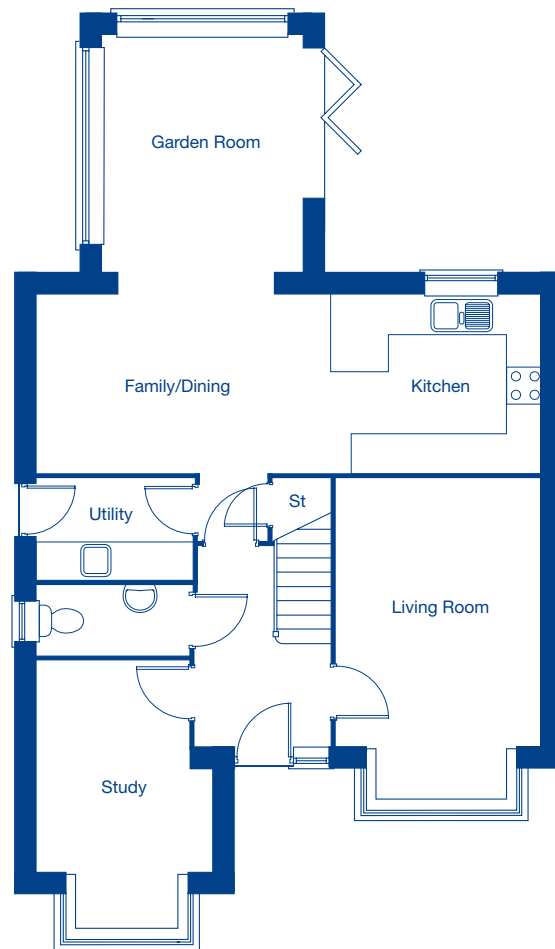


Westlow Heath

The Northwood – 4 bedroom detached home

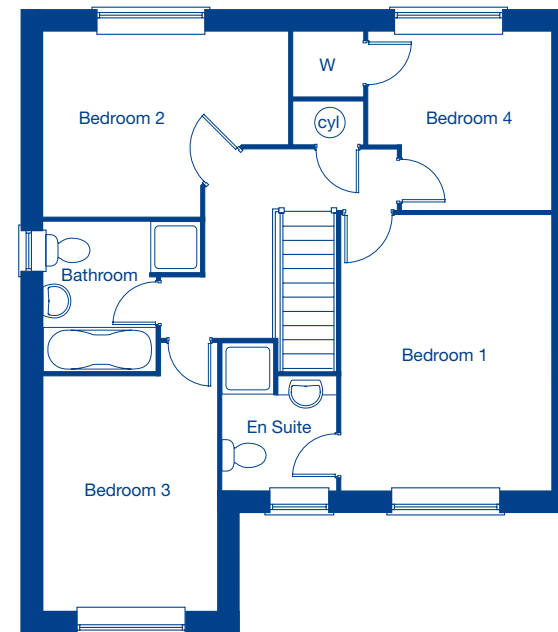


JONES
HOMES



Ground Floor

| | | |
|-----------------------|---------------|---------------|
| Living Room | 4.96m x 3.27m | 16'3" x 10'9" |
| Kitchen/Family/Dining | 7.98m x 2.79m | 26'2" x 9'2" |
| Garden Room | 3.69m x 3.14m | 12'1" x 10'4" |
| Study | 4.06m x 2.41m | 13'4" x 7'11" |



First Floor

| | | |
|-----------|---------------|----------------|
| Bedroom 1 | 4.28m x 3.34m | 14'1" x 10'11" |
| Bedroom 2 | 3.80m x 2.86m | 12'6" x 9'5" |
| Bedroom 3 | 3.57m x 2.67m | 11'9" x 8'9" |
| Bedroom 4 | 2.90m x 2.78m | 9'6" x 9'1" |